

AQUAPOINTE RANGE

Wall-Recessed Bottle Fillers

Models: AC-MW8EBFY Contactless, Refrigerated

AquaPointe AC-MW8EBFY

Delivering 60LPH of 10°C water at 21°C ambient.
Cooling system uses R-134a refrigerant.

These fully recessed mount, bottle fillers include an electronic sensor for a contactless (touch free) activation and a 30 second shut off timer. The Bottle Counter conveniently displays the number of times the unit has been used, encouraging the refill of sports bottles.

Key AquaPointe moulded components shall contain Freshield, which utilises a silver-based antimicrobial compound that reduces the growth of micro-organisms and mildew to protect the surfaces from discolouration, odours and degradation.

Complies with ANSI A117.1 and ADA. Shall comply with all relevant VE directives (LVD, EMC, RoHS). Shall comply with ANSI/NSF 61.

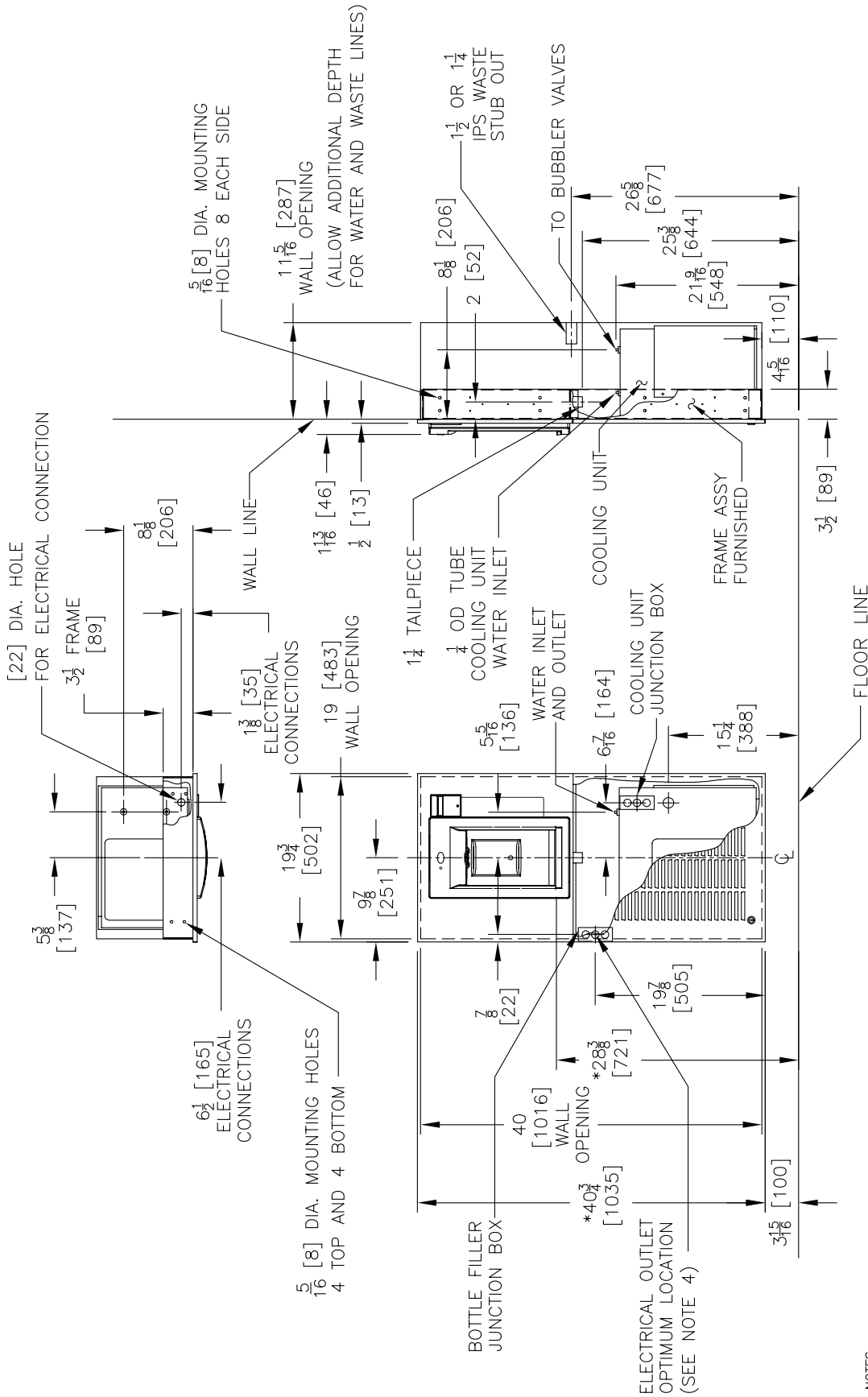
Suitable for public building, gymnasiums, sports complexes, hospitals, schools, and offices.



Model Code	AC-MW8EBFY
Activation	Contactless (Infrared sensor)
Sensor Coverage	Up to 5cm (approx.)
Filtration	Filter (optional), Built-in 100 micron strainer
Disinfection	Available with Quasar UVC-LED (Model: AC-MW8EBQY)
Auto-Off Water Flow	Yes
Water Connections	Inlet: 1/2" BSP connector, Drain: 40mm Female Socket (Not trapped)
Exterior	Antimicrobial ABS Plastic, Brushed Stainless Steel
Chassis	Heavy Duty Galvanised Steel
Dimensions	1035(H) x 502(W) x 46(D)
Alcove Height	265 mm
Net Weight	35 kg
Power Supply	220-240V, 50/60 Hz
Cooling Performance	60 LPH Rated Capacity & Base Rate (10°C in 21°C amb. temp.)
Full Load Amps	3.7A
Rated Watts	627 W
Country of Origin	Mexico
Certifications	WaterMark, ANSI/NSF 61, CABO/ANSI A117.1, ADA, CE (LVD, EMC, RoHS)
Warranty	1 Year Full, 2 Years Parts Only

Your Partner in Cool.

AQUA
COOLER



WATER INLET: DN15 MALE BSP CONNECTION. 1/2" BSP FEMALE FITTING ALSO INCLUDED.
 WASTE: DN40 SOCKET OUTLET. FLEXIBLE COUPLING. NEEDS TRAP FITTED.
 POWER: 3 PIN POWER CABLE PROVIDED TO BE CONNECTED TO RCD PROTECTED CIRCUIT

- NOTES:**
- RECOMMENDED ADULT HEIGHT INSTALLATION SHOWN. ADJUST VERTICAL DIMENSIONS AS REQUIRED TO COMPLY WITH FEDERAL, STATE AND LOCAL CODES.
 - STOP VALVE, TRAP, PIPE CONNECTOR TO WASTE LINE NOT PROVIDED. SHORT RADIUS TRAP REQUIRED.
 - ALL DIMENSIONS ARE IN INCHES. DIMENSIONS IN BRACKETS [] ARE IN MILLIMETERS.