

# AQUAPOINTE RANGE

## Wall-Recessed Bubblers

Models: AC-M8WRY Manual Dispense, Refrigerated  
AC-M8WRYEE Contactless Dispense, Refrigerated

**AC-M8WRY is the contactless bubbler solution for a wide variety of applications.**

AC-M8WRY delivers 60LPH of 10°C water at 21°C ambient.

This modular drinking fountain is manually activated via the antimicrobial touch-button. Contactless Dispense is available with the model AC-M8WRYEE.

Complies with ANSI A117.1 and ADA. Shall comply with all relevant CE directives (LVD, EMC, RoHS). Shall comply with ANSI/NSF 61.

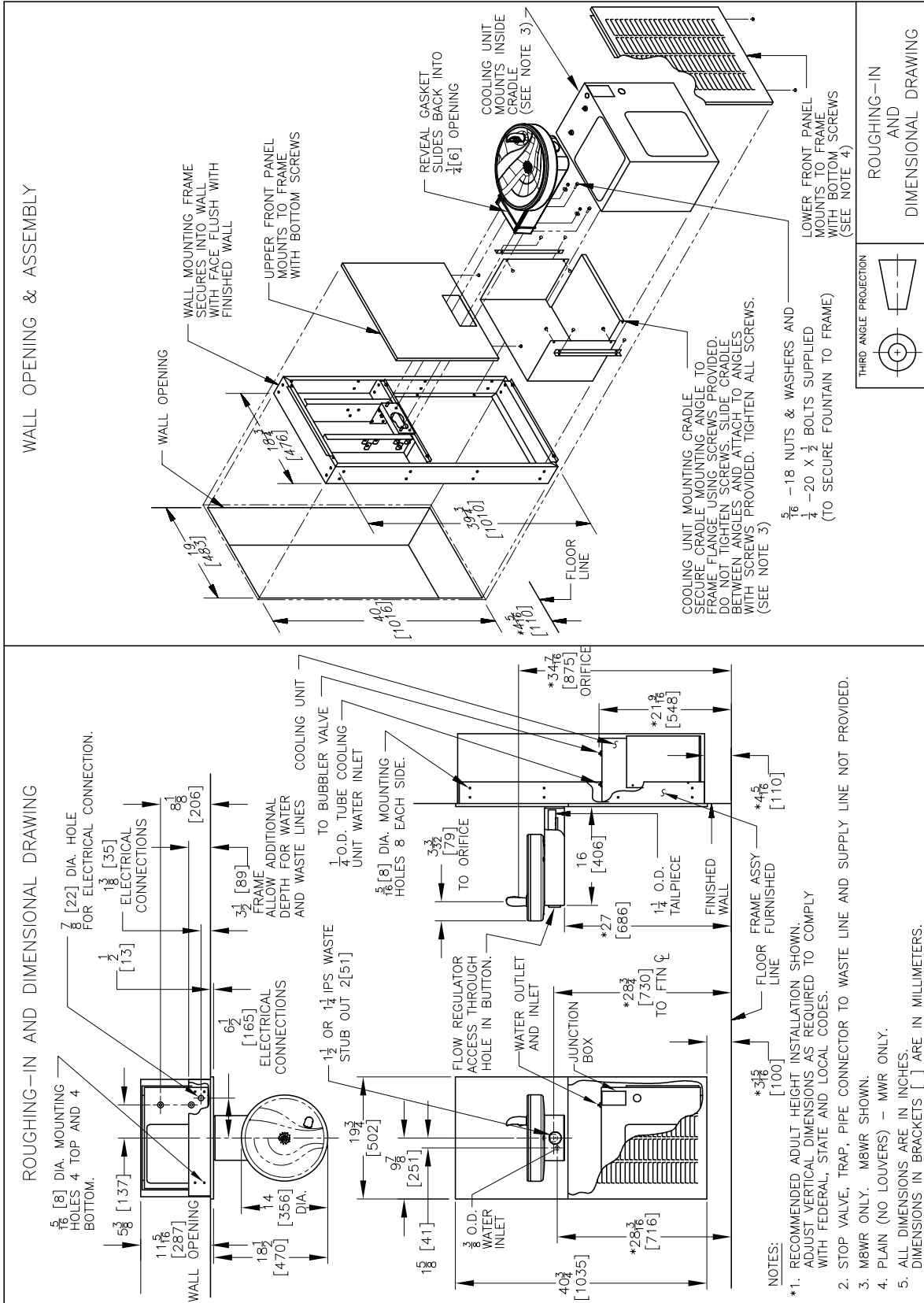
Suitable for public building, gymnasiums, sports complexes, hospitals, schools, and offices.



Model Code	AC-M8WRY
<b>Activation</b>	Mechanical (touch-button) Contactless (Infrared Sensor) (AC-M8WRYEE)
<b>Filtration</b>	Filter (optional), Built-in 100 micron strainer
<b>Auto-Off Water Flow</b>	No
<b>Water Connections</b>	Inlet: 1/2" BSP connector, Drain: 40mm Female Socket (Not trapped)
<b>Exterior</b>	Antimicrobial ABS Plastic, Antimicrobial copper touch points, Brushed Stainless Steel
<b>Chassis</b>	Heavy Duty Galvanised Steel
<b>Dimensions</b>	2035(H) x 502(W) x 483(D) mm (287 recessed)
<b>Net Weight</b>	45 kg
<b>Power Supply</b>	220-240V, 50/60 Hz
<b>Cooling Performance</b>	60 LPH Rated Capacity & Base Rate (10°C in 21°C amb. temp.)
<b>Full Load Amps</b>	2.2A
<b>Rated Watts</b>	340 W
<b>Energy System</b>	Refrigeration is on only when in use or if water temp increases during long period of standby.
<b>Country of Origin</b>	Mexico
<b>Certifications</b>	WaterMark, ANSI/NSF 61, CABO/ANSI A117.1, ADA, CE (LVD, EMC, RoHS)
<b>Warranty</b>	1 Year Full, 2 Years Parts Only

Your Partner in Cool.

**AQUA  
COOLER**



WATER INLET: DN15 MALE BSP CONNECTION. 1/2" BSP FEMALE FITTING ALSO INCLUDED.  
WASTE: DN40 SOCKET OUTLET. FLEXIBLE COUPLING. NEEDS TRAP FITTED.  
POWER: 3 PIN POWER CABLE PROVIDED TO BE CONNECTED TO RCD PROTECTED CIRCUIT