

FREE STANDING RANGE

Models: AC-PCP10EBFY Contactless Dispense, Refrigerated

Free Standing AC-PCP10EBFY

Delivering 75LPH of 10°C water at 21°C ambient.
Cooling system uses R-134a refrigerant.

This free standing bottle filler includes an electronic sensor for a contactless (touch free) activation and a 30 second shut off timer.

Moulded components shall contain Freshield, which utilises a silverbased antimicrobial compound that reduces the growth of microorganisms and mildew to protect the surfaces from discolouration, odours and degradation.

Complies with ANSI A117.1 and ADA. Shall comply with all relevant CE directives (LVD , EMC, RoHS). Shall comply with ANSI/NSF 61.

Suitable for public building, gymnasiums, sports complexes, hospitals, schools, and offices.

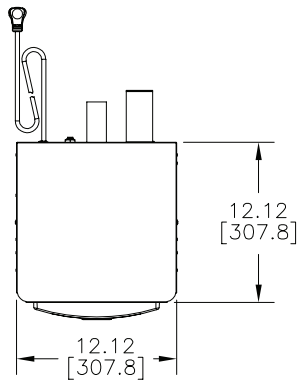


Model Code	AC-PCP10EBFY
Activation	Contactless (Infrared sensor)
Sensor Coverage	Up to 5cm (approx.)
Filtration	Filter (optional), Built-in 100 micron strainer
Disinfection	Quasar UVC-LED (optional)(PCP10EBQY)
Auto-Off Water Flow	Yes
Water Connections	Inlet: 1/2" BSP connector, Drain: 40mm Female Socket (Not trapped)
Exterior	Antimicrobial ABS Plastic, Brushed Stainless Steel
Chassis	Heavy Duty Galvanised Steel
Dimensions	1262(H) x 304(W) x 339(D)
Alcove Height	265 mm
Net Weight	33.6 kg
Power Supply	220-240V, 50/60 Hz
Cooling Performance	60 LPH Rated Capacity & Base Rate (10°C in 21°C amb. temp.)
Full Load Amps	2.2A
Rated Watts	340 W
Energy System	Refrigeration is on only when in use or if water temp increases during long period of standby.
Country of Origin	Mexico
Certifications	WaterMark, ANSI/NSF 61, CABO/ANSI A117.1, ADA, CE (LVD, EMC, RoHS), WRAS
Warranty	1 Year Full, 2 Years Parts Only

Your Partner in Cool.

AQUA
COOLER

TECHNICAL DRAWINGS

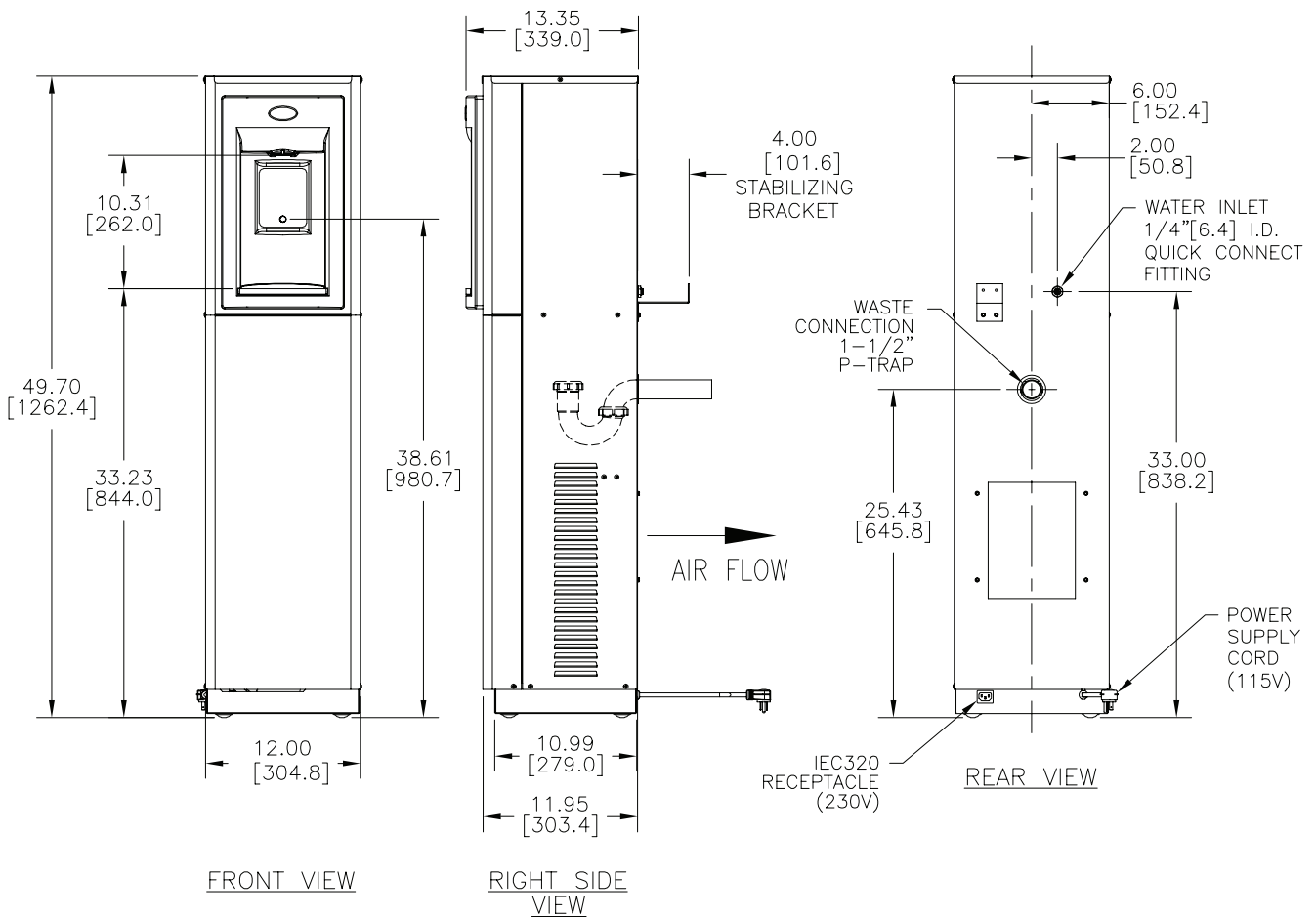


PLAN VIEW

ALL DIMENSIONS ARE IN INCHES.

DIMENSIONS IN BRACKETS [] ARE IN MILLIMETERS.

ALLOW 4" [102] FOR VENTILATION AT THE REAR OF THE WATER COOLER AND THE SIDES IF SET IN AN ALCOVE OR NEAR A CORNER.



FRONT VIEW

RIGHT SIDE VIEW

REAR VIEW

WATER INLET: DN15 MALE BSP CONNECTION. 1/2" BSP FEMALE FITTING ALSO INCLUDED.
 WASTE: DN40 SOCKET OUTLET. FLEXIBLE COUPLING. NEEDS TRAP FITTED.
 POWER: 3 PIN POWER CABLE PROVIDED TO BE CONNECTED TO RCD PROTECTED CIRCUIT