

HYDRATION STATION RANGE

Wall-Recessed Hydration Stations

Models: AC-M8CREBFY Contactless and Manual Dispense, Refrigerated

AC-M8CREBFY

Delivering 60LPH of 10°C water at 21°C ambient.
Cooling system uses R-134a refrigerant.

This surface mount hydration station combo has two activation methods. The bottle filler includes an electronic sensor for a contactless (touch free) activation and a 30 second shut off timer. The radii drinking fountain is activated via the push-buttons.

The Bottle Counter conveniently displays the number of times the unit has been used, encouraging the refill of sports bottles.

Key moulded components shall contain Freshield, which utilises a silver-based antimicrobial compound that reduces the growth of micro-organisms and mildew to protect the surfaces from discolouration, odours and degradation.

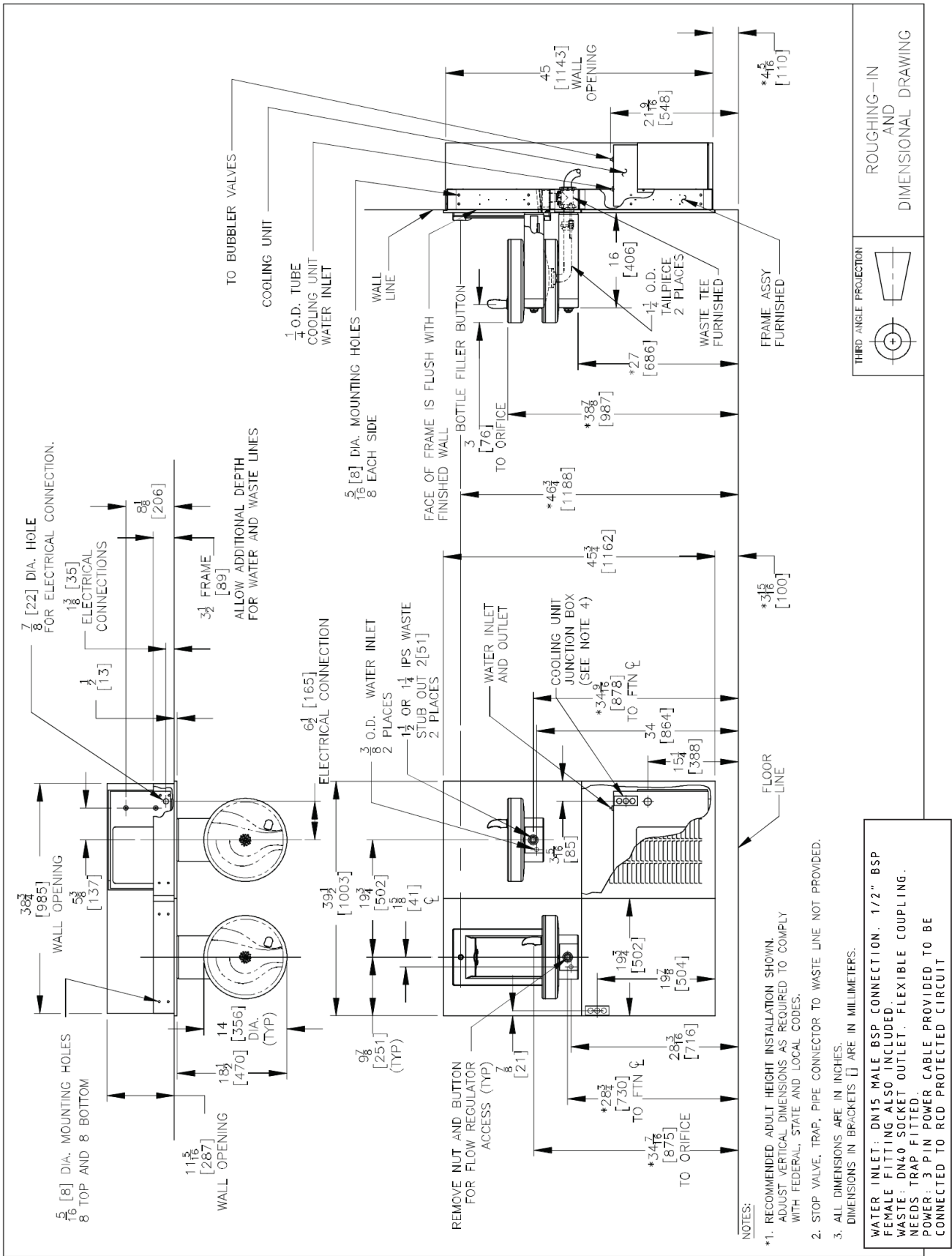
Suitable for public building, gymnasiums, sports complexes, hospitals, schools, and offices.



Model Code	AC-M8CREBFY
Activation	Bottle Filler: Contactless (Infrared Sensor) Drinking Fountain: Manual (Push-button)
Filtration	Filter (optional), Built-in 100 micron strainer
Auto-Off Water Flow	No
Disinfection	Available with Quasar UVC-LED (Model: AC-M8CREBQY)
Water Connections	Inlet: 1/2" BSP connector, Drain: 40mm Female Socket (Not trapped)
Exterior	Antimicrobial ABS Plastic, Brushed Stainless Steel
Chassis	Heavy Duty Galvanised Steel
Dimensions	1035(H) x 1003(W) x 483(D) (287 recessed)
Alcove Height	265 mm
Net Weight	824 kg
Power Supply	220-240V, 50/60 Hz
Cooling Performance	60 LPH Rated Capacity & Base Rate (10°C in 21°C amb. temp.)
Full Load Amps	2.2A
Rated Watts	340 W
Energy System	Refrigeration is on only when in use or if water temp increases during long period of standby.
Country of Origin	Mexico
Certifications	WaterMark, ANSI/NSF 61, CABO/ANSI A117.1, ADA, CE (LVD, EMC, RoHS), WRAS
Warranty	1 Year Full, 2 Years Parts Only

Your Partner in Cool.

AQUA
COOLER



NOTES:

- RECOMMENDED ADULT HEIGHT INSTALLATION SHOWN. ADJUST VERTICAL DIMENSIONS AS REQUIRED TO COMPLY WITH FEDERAL, STATE AND LOCAL CODES.
- STOP VALVE, TRAP, PIPE CONNECTOR TO WASTE LINE NOT PROVIDED.
- ALL DIMENSIONS ARE IN INCHES. DIMENSIONS IN BRACKETS [] ARE IN MILLIMETERS.

WATER INLET: DN15 MALE BSP CONNECTION. 1/2" BSP FEMALE FITTING ALSO INCLUDED.
 WASTE: DN40 SOCKET OUTLET. FLEXIBLE COUPLING. NEEDS TRAP FITTED.
 POWER: 3 PIN POWER CABLE PROVIDED TO BE CONNECTED TO RCD PROTECTED CIRCUIT