

VERSACOOLER RANGE

Surface-Mounted Bubbler

Models: AC-P8ACTY Contactless Dispense, Refrigerated

VersaCooler AC-P8ACTY is the contactless solution to eliminate worry of cross-contamination!

Delivering ambient drinking water.

VersaCooler AC-PG8ACTY delivers 60LPH of 10°C water at 21°C ambient. This drinking fountain includes an electronic sensor underneath the nose for a contactless (touch free) activation and a 30 second shut off timer.

Key VersaCooler moulded components shall contain Freshield, which utilises a silver-based antimicrobial compound that reduces the growth of micro-organisms and mildew to protect the surfaces from discolouration, odours and degradation.

Complies with ANSI A117.1 and ADA. Shall comply with all relevant VE directives (LVD, EMC, RoHS). Shall comply with ANSI/NSF 61.

Suitable for public building, gymnasiums, sports complexes, hospitals, schools, and offices.

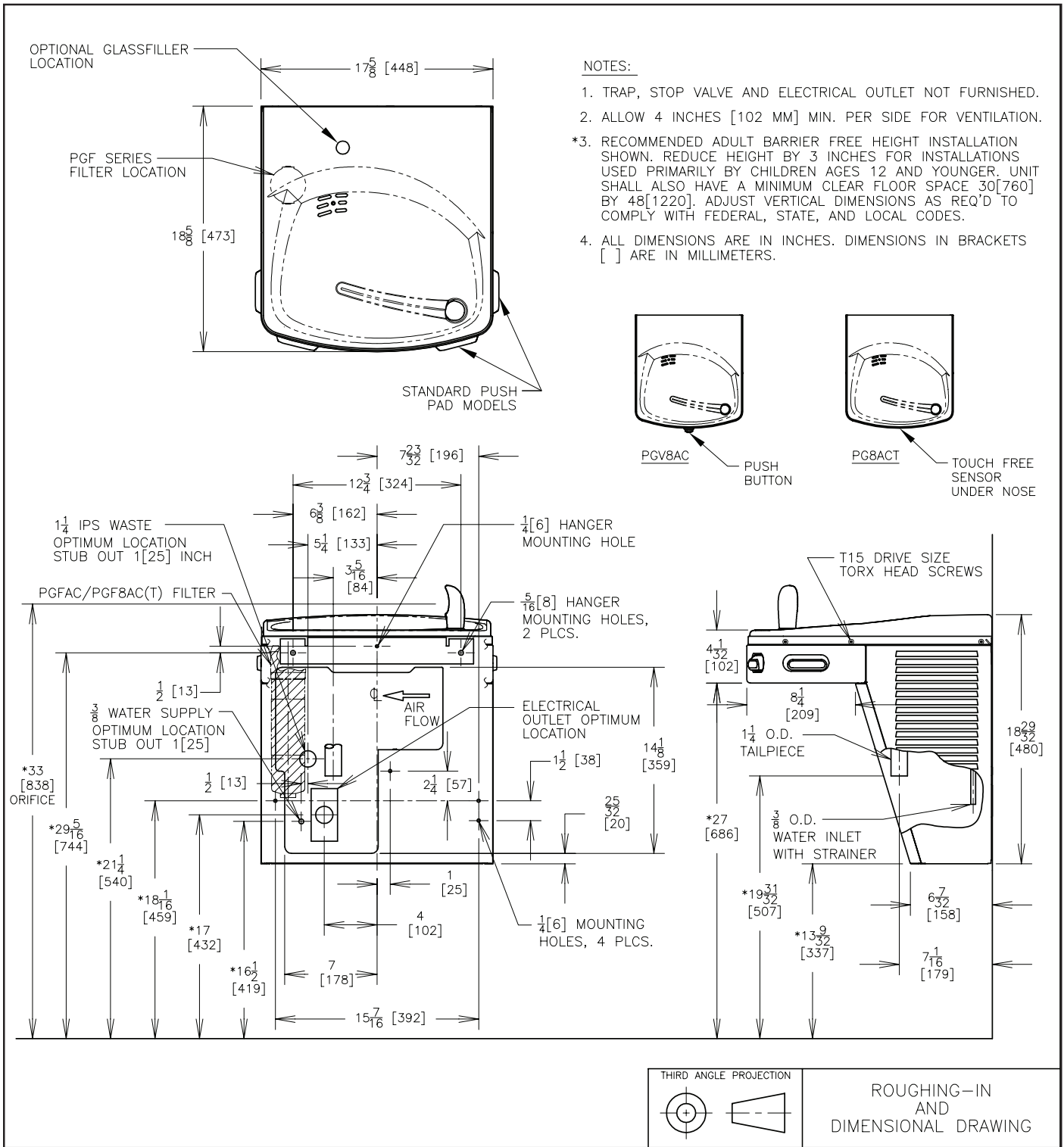


Model Code	AC-P8ACTY
Activation	Contactless (Downward facing Infrared sensor)
Sensor Coverage	Up to 5cm (approx.)
Filtration	Filter (optional), Built-in 100 micron strainer
Auto-Off Water Flow	Yes
Water Connections	Inlet: 1/2" BSP connector, Drain: 40mm Female Socket (Not trapped)
Exterior	Antimicrobial ABS Plastic, Brushed Stainless Steel
Chassis	Heavy Duty Galvanised Steel
Dimensions	480(H) x 448(W) x 473(D)
Net Weight	27 kg
Power Supply	220-240V, 50/60 Hz
Cooling Performance	60 LPH Rated Capacity & Base Rate (10°C in 21°C amb. temp.)
Full Load Amps	2.2A
Rated Watts	450 W
Energy System	Refrigeration is on only when in use or if water temp increases during long period of standby.
Country of Origin	Mexico
Certifications	WaterMark, ANSI/NSF 61, CABO/ANSI A117.1, ADA, CE (LVD, EMC, RoHS)
Warranty	1 Year Full, 2 Years Parts Only

Your Partner in Cool.

**AQUA
COOLER**

TECHNICAL DRAWINGS



NOTES:

1. TRAP, STOP VALVE AND ELECTRICAL OUTLET NOT FURNISHED.
2. ALLOW 4 INCHES [102 MM] MIN. PER SIDE FOR VENTILATION.
- *3. RECOMMENDED ADULT BARRIER FREE HEIGHT INSTALLATION SHOWN. REDUCE HEIGHT BY 3 INCHES FOR INSTALLATIONS USED PRIMARILY BY CHILDREN AGES 12 AND YOUNGER. UNIT SHALL ALSO HAVE A MINIMUM CLEAR FLOOR SPACE 30[760] BY 48[1220]. ADJUST VERTICAL DIMENSIONS AS REQ'D TO COMPLY WITH FEDERAL, STATE, AND LOCAL CODES.
4. ALL DIMENSIONS ARE IN INCHES. DIMENSIONS IN BRACKETS [] ARE IN MILLIMETERS.

WATER INLET: DN15 MALE BSP CONNECTION. 1/2" BSP FEMALE FITTING ALSO INCLUDED.
 WASTE: DN40 SOCKET OUTLET. FLEXIBLE COUPLING. NEEDS TRAP FITTED.
 POWER: 3 PIN POWER CABLE PROVIDED TO BE CONNECTED TO RCD PROTECTED CIRCUIT



Phone Numbers
 Sales: 1300 278 226
 Service: 1800 278 226

Address
 U14, 2-12 Knobel Court
 Shailer Park QLD 4128

Internet
www.aquacooler.com.au
info@aquacooler.com.au