

# VERSACOOLER RANGE

## Surface-Mounted Bubblers

Models: AC-PV8ACSLY Manual Dispense, Refrigerated, Split-Level, Vandal-Resistant  
AC-PVACSL Manual Dispense, Non-Refrigerated, Split-Level, Vandal-Resistant

### Versacooler AC-PV8ACSLY

Versacooler PV8ACSLY delivers 60LPH of 10°C water at 21°C ambient.

### Versacooler AC-PVACSL

Delivering ambient drinking water.

This split-level drinking fountain is manually activated via the vandal-resistant touch-button.

Key Versacooler moulded components shall contain Freshield, which utilises a silver-based antimicrobial compound that reduces the growth of micro-organisms and mildew to protect the surfaces from discolouration, odours and degradation.

Complies with ANSI A117.1 and ADA. Shall comply with all relevant CE directives (LVD, EMC, RoHS). Shall comply with ANSI/NSF 61.

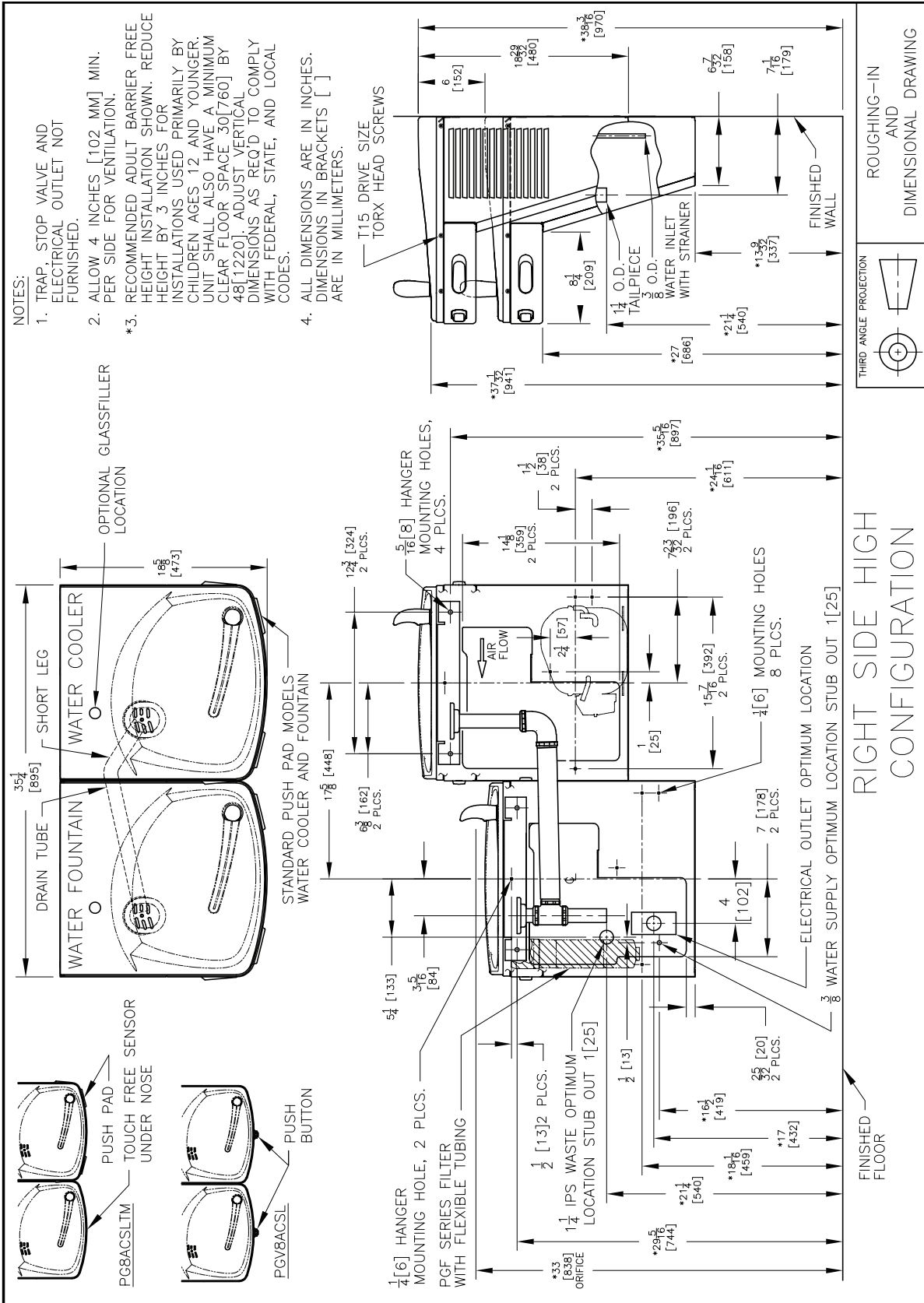
Suitable for public building, gymnasiums, sports complexes, hospitals, schools, and offices.



Model Code	AC-PV8ACSLY	AC-PVACSL
<b>Activation</b>	Mechanical (Vandal-Resistant touch-button)	
<b>Filtration</b>	Filter (optional), Built-in 100 micron strainer	
<b>Auto-Off Water Flow</b>	No	
<b>Water Connections</b>	Inlet: 1/2" BSP connector, Drain: 40mm Female Socket (Not trapped)	
<b>Exterior</b>	Antimicrobial ABS Plastic, Brushed Stainless Steel	
<b>Chassis</b>	Heavy Duty Galvanised Steel	
<b>Dimensions</b>	480(H) x 448(W) x 473(D) (each)	
<b>Net Weight</b>	38 kg	
<b>Power Supply</b>	220-240V, 50/60 Hz	-
<b>Cooling Performance</b>	60 LPH Rated Capacity & Base Rate (10°C in 21°C amb. temp.)	Non-refrigerated
<b>Full Load Amps</b>	2.2A	-
<b>Rated Watts</b>	450 W	-
<b>Energy System</b>	Refrigeration is on only when in use or if water temp increases during long period of standby.	-
<b>Country of Origin</b>	Mexico	
<b>Certifications</b>	WaterMark, ANSI/NSF 61, CABO/ANSI A117.1, ADA, CE (LVD, EMC, RoHS)	
<b>Warranty</b>	1 Year Full, 2 Years Parts Only	

Your Partner in Cool.

**AQUA**  
**COOLER**



WATER INLET: DN15 MALE BSP CONNECTION. 1/2" BSP FEMALE FITTING ALSO INCLUDED.  
 WASTE: DN40 SOCKET OUTLET. FLEXIBLE COUPLING. NEEDS TRAP FITTED.  
 POWER: 3 PIN POWER CABLE PROVIDED TO BE CONNECTED TO RCD PROTECTED CIRCUIT

ROUGHING-IN AND DIMENSIONAL DRAWING