



SURFACE MOUNTED BOTTLE FILLER CONVERSION

Usage and Care Manual

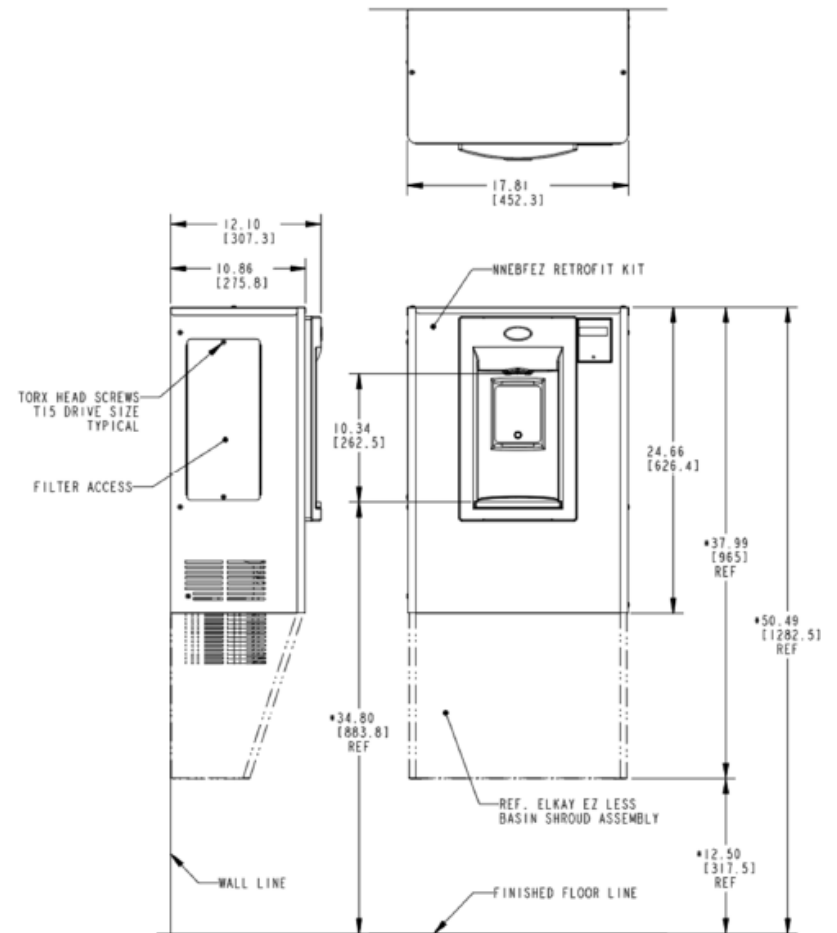
Models: AC-NNEBFG

Your Partner in Cool.

AQUA
COOLER

PRODUCT DIAGRAM

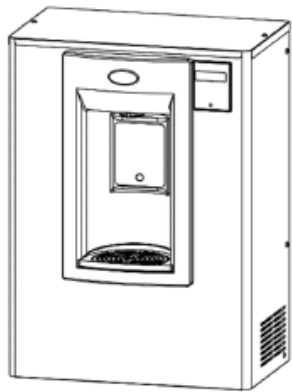
Your Partner in Cool.



NOTES:

1. *DIMENSIONS ARE REFERENCE ONLY
2. ALL DIMENSIONS ARE IN INCHES. DIMENSIONS IN BRACKETED [] ARE MILLIMETRES.

WHAT'S INCLUDED



Assembled NNEBFEZ Cabinet



1/4" Elbow



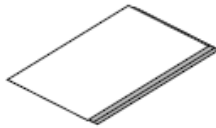
1/4" Union



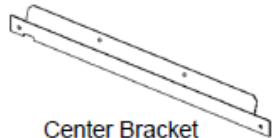
0.25" Terminals x2



10" of 1/4" OD plastic tubing with 9" of tubing insulation



Installation instructions



Center Bracket



Drain Elbow x2



Side Mounting Bracket x2



Strain Relief P-Clip



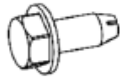
Drainpipe x2



#8 Torx Screws x3



#10 Hex Screws x6



#8 Thread Cutting Hex Screw

TOOLS & HARDWARE REQUIRED:

- Electrical drill/driver
- Small tubing cutter for plastic line
- 5/16" nut driver
- 1/4" nut driver
- Means to cut 1-1/4" drain pipe
- T15 Torx screwdriver and bit
- T20 Torx screwdriver and bit
- 4 appropriate anchors (not supplied)

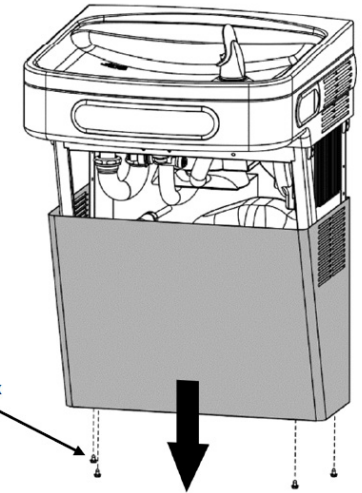
PREPARATION

PLEASE READ THESE INSTRUCTIONS BEFORE INSTALLING THE UNIT

Remove fountain wrapper

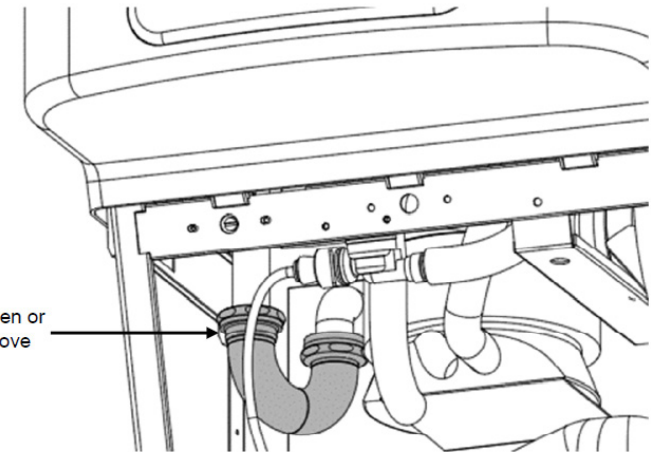
Turn OFF water supply to the unit. Bleed and remaining pressure from the lines by activating the bubbler valve.

Disconnect power by UNPLUGGING the unit from the wall socket.



Remove 4x #10 Hex Screws

Loosen or remove the P-trap so that the fountain nose assembly may be freely removed in the next step.



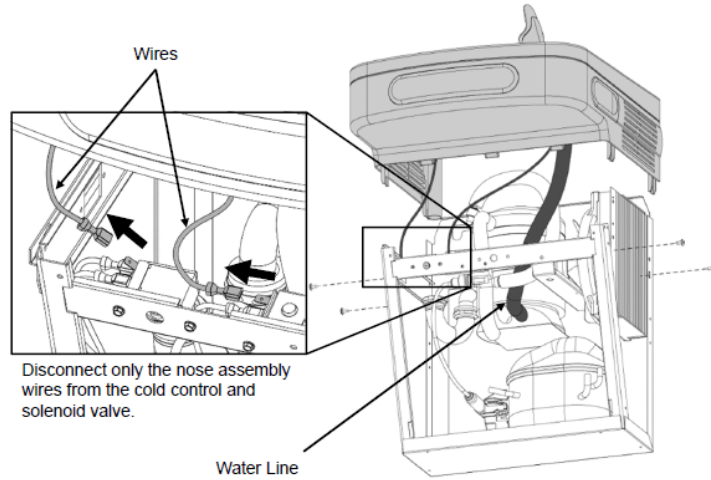
Loosen or Remove

PREPARATION CONT.

Remove fountain nose assembly. Tool Needed: T20 Torx bit

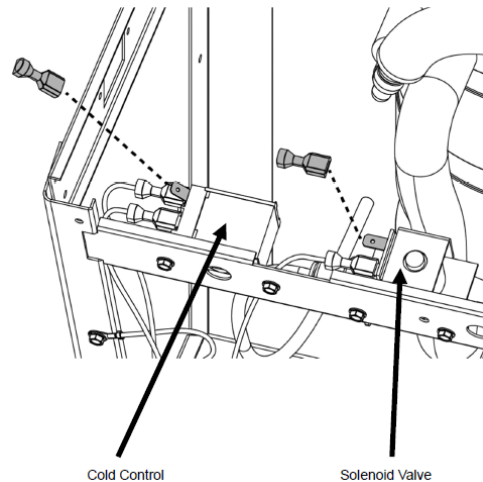
- Remove 4x #10 Torx screws from the fountain.
- Disconnect ONLY the nose assembly wires from the cold control and solenoid valve. Leave all other wires connected to the cold control and solenoid valve. For nonrefrigerated models, unplug the unit.
- Disconnect the water line from the bubbler inside the nose. DO NOT disconnect from the fountain.

DO NOT REMOVE COLD CONTROL OR SOLENOID VALVE ASSEMBLIES FROM THE FOUNTAIN.



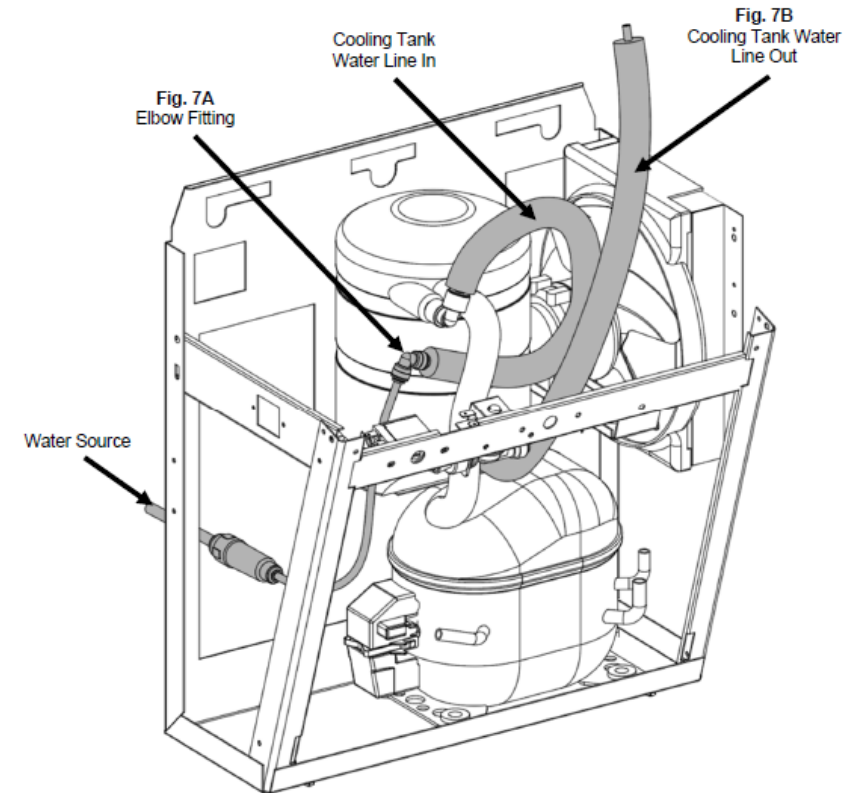
After the nose assembly has been removed, cover the two bare terminals with the insulated female spade terminals (provided) for safety.

NOTE: The image shown may differ from some models but the instructions will still apply.



PREPARATION CONT.

Locate the solenoid valve on the Elkay unit. Disconnect both water lines from the solenoid valve. Join the two water lines together using a ¼" elbow fitting (provided) (Fig. 7A). Allow the cooling tank water outlet line to extend freely upward (Fig. 7B).

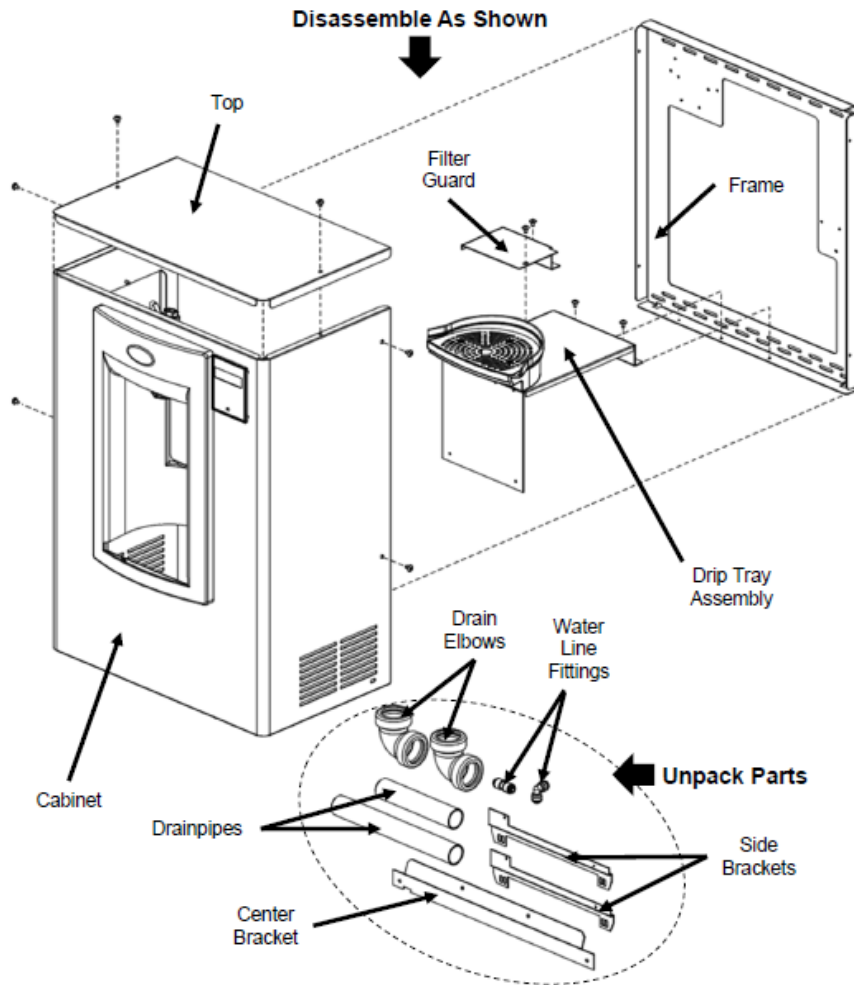


Shown above is the correct final orientation

INSTALLATION

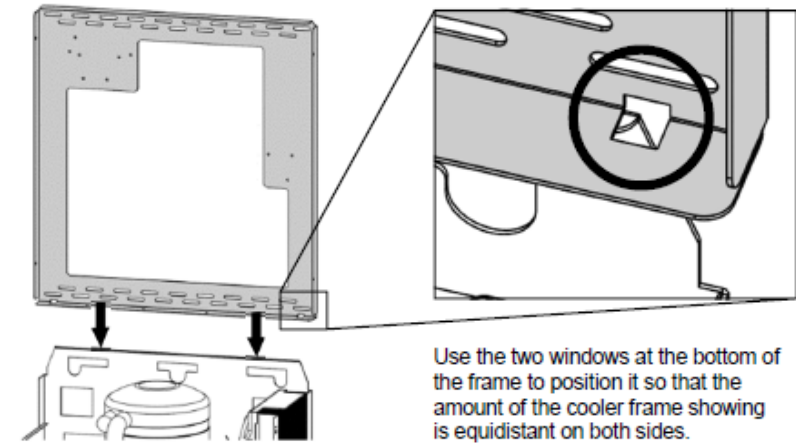
The NNEBFPG comes partially assembled for shipping. Remove the kit from the packaging and separate it into the assemblies and components shown below. **Be sure not to misplace the provided mounting screws and insulated terminals.**

Tool Needed: T15 Torx bit

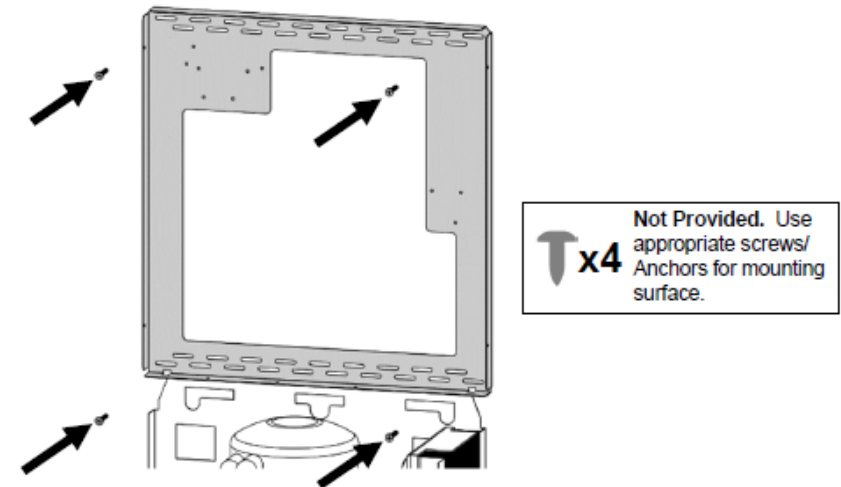


INSTALLATION CONT.

Without taking the cooler off the wall, place the retrofit frame against the wall and set it onto the top flange of the cooler frame.

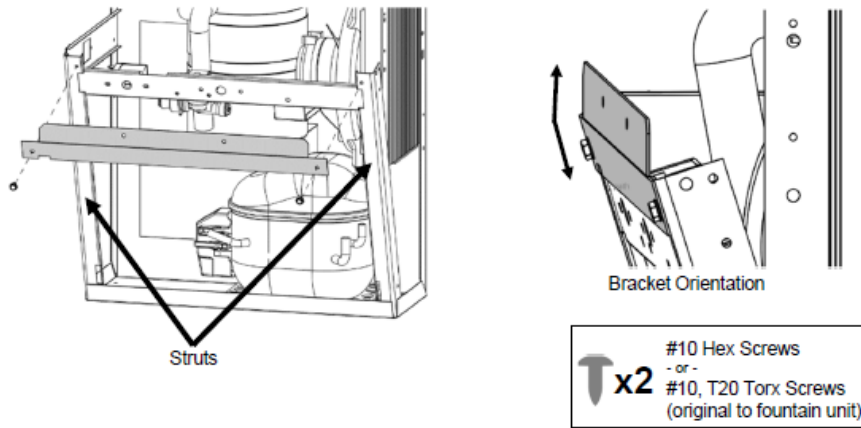


Affix the frame to the wall with at least 4 anchors into any appropriate anchor points through the staggered slotted holes. **Be careful to ensure the frame stays centered on the cooler frame.**

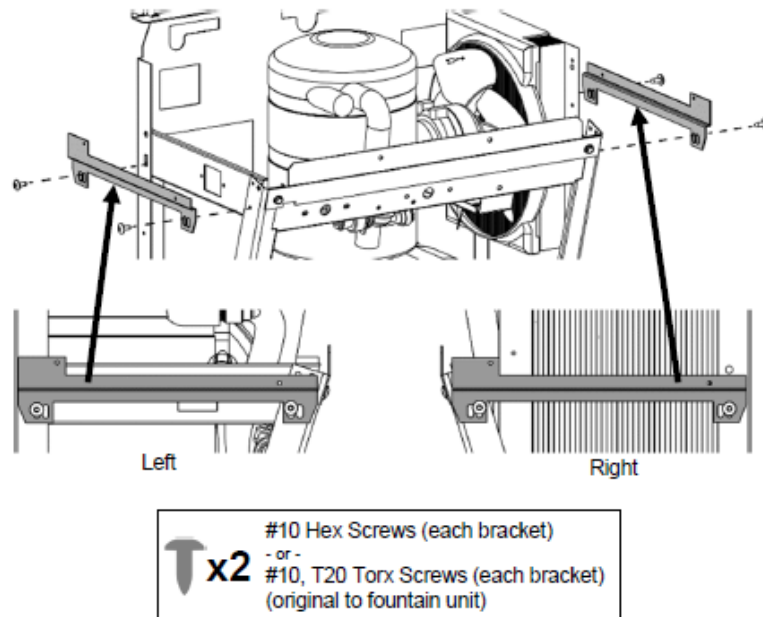


INSTALLATION CONT.

Assemble the center bracket to the holes in each of the cooler struts.

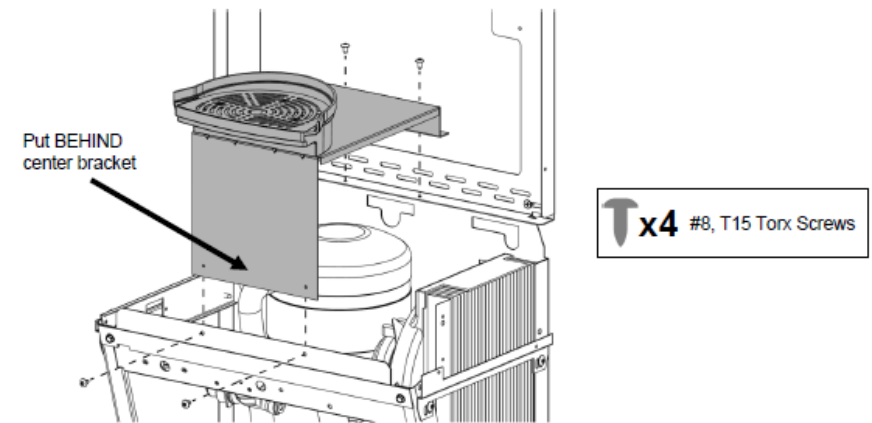


Assemble the two side brackets to the cooler frame using the slotted holes on the bottom with two #10 screws for each bracket. Ensure that the brackets are oriented as shown below.

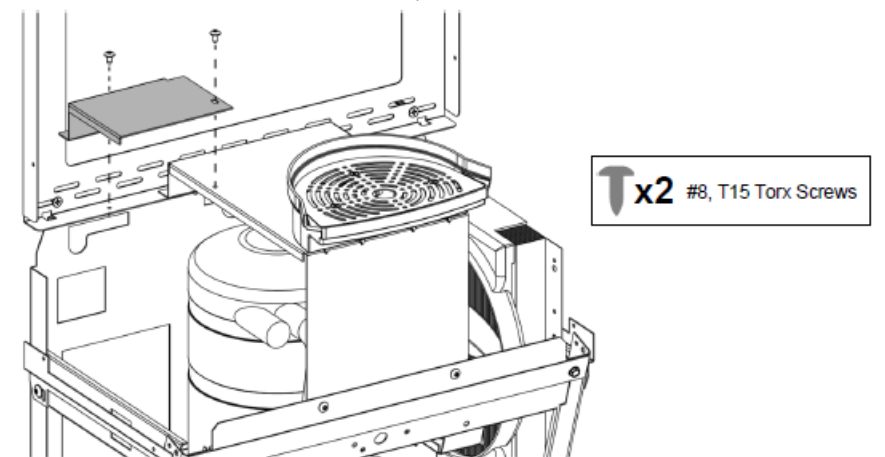


INSTALLATION CONT.

Install the drip tray support bracket (keep drip tray pre-assembled) to the center bracket and frame using 4x, #8 Torx screws which are provided in the kit.



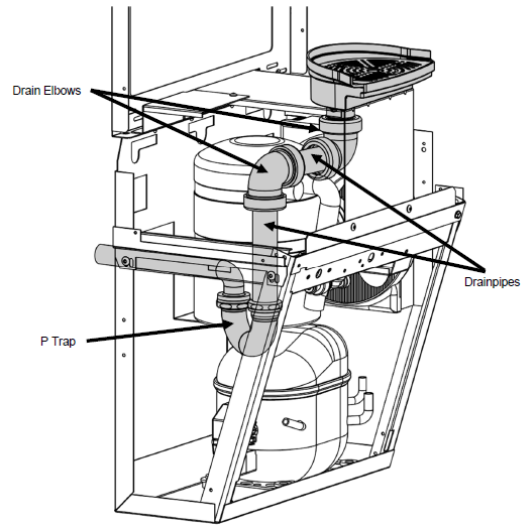
Attach the filter guard bracket with 2x, #8 Torx screws to the frame and drip tray support bracket. This bracket helps to prevent the filter cartridge from falling into the cooler unit below during installation or replacement.



INSTALLATION CONT.

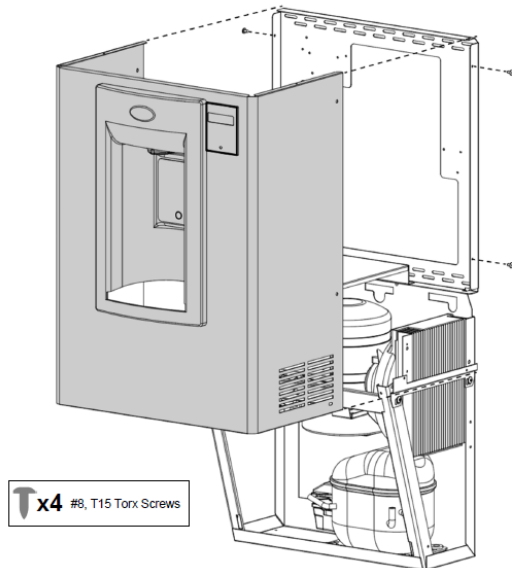
Attach one of the drain elbows to the drip tray stem. Insert the drainpipe provided into the elbow and then attach another elbow onto the pipe. Use the remaining drainpipe and connect the drip tray drainage system to the installed P-trap.

NOTE: Drainpipes will need to be positioned and cut to length as needed.



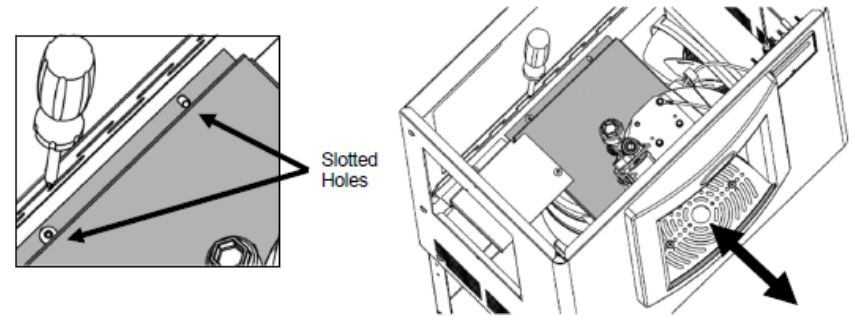
Assemble NNEBFEZ wrapper to the installed frame. Rest the alcove on the drip tray and ensure the wrapper walls rest **OUTSIDE** of the frame and side brackets.

NOTE: The drip tray will hold the weight of the wrapper but it is recommended to keep a hold on the unit during installation for safety.

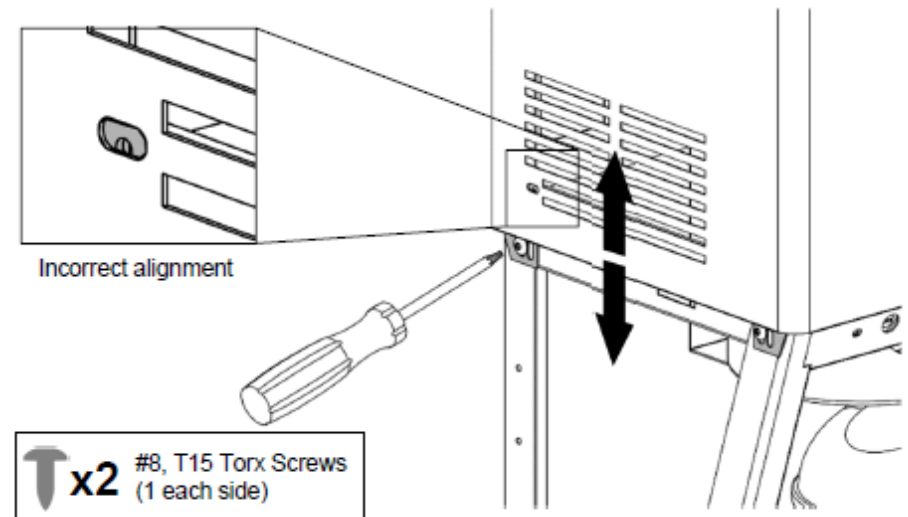


INSTALLATION CONT.

If the outer edge of the drip tray is not properly aligned, loosen the screws on the back of the drip tray support bracket and slide the bracket forward or backward as needed. Then retighten the screws.



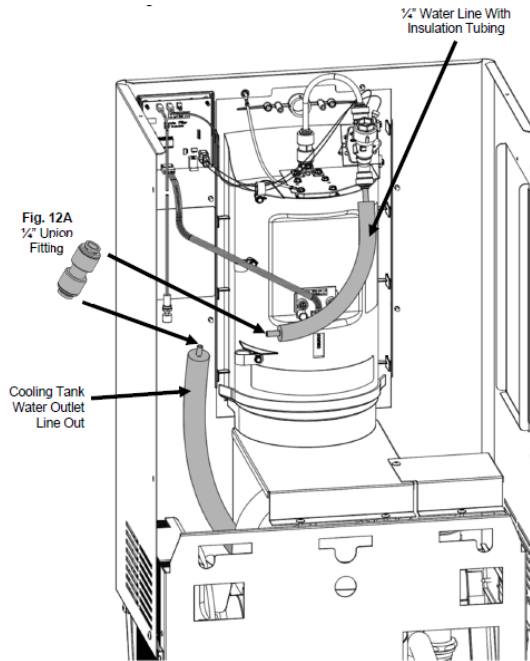
Once the wrapper has been installed, loosen the side bracket mounting screws until the bracket can be slid up and down. Adjust the bracket until the mounting hole screws through the slot and then drive in one of the #8 Torx screws and then tighten the two #10 mounting screws.



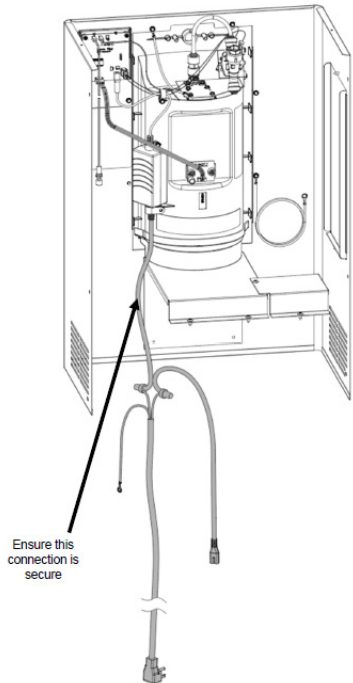
INSTALLATION CONT.

Attach the 1/4" union fitting to the Cooling Tank water line out (Fig 12A).

Attach one end of the provided 1/4" water line with insulation tubing to the solenoid valve located on the alcove, and the other end to the 1/4" union fitting. Cut provided water line and insulation tubing as needed.



Guide the power cord down to the lower portion of the cooler. Ensure that the power cord does not become entangled with other components and ensure that the IEC connector is firmly installed into the power brick.

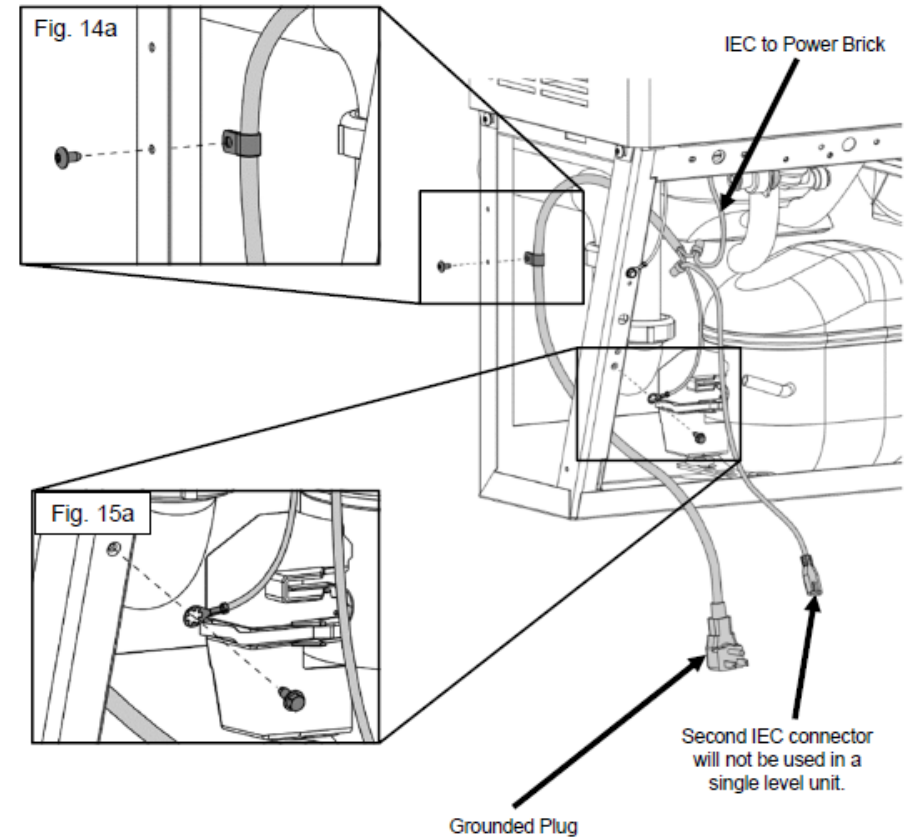


INSTALLATION CONT.

Install the provided strain relief P-Clip to the power cord roughly 36" from the grounded plug. Attach it to the back side flange of the fountain frame with a #8 Torx screw. (Figure 14a).

Attach the ring terminal to the ground screw on the left side of the fountain strut through the lower flared hole using the provided #8 thread cutting hex Screw. (Fig 15a). **Do not remove/alter the original ground.**

Finish by plugging in the grounded plug into the duplex socket



INSTALLATION CONT.

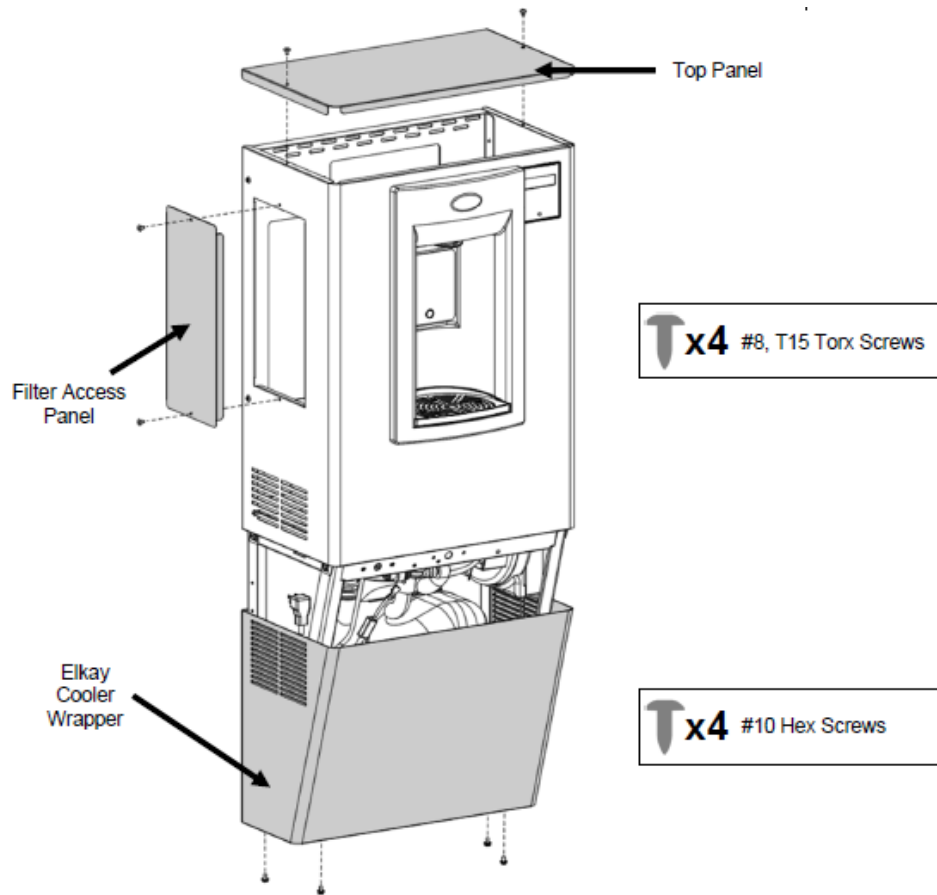
Turn on water supply and check for any leaks.

Ensure that nothing is obstructing the fan blade.

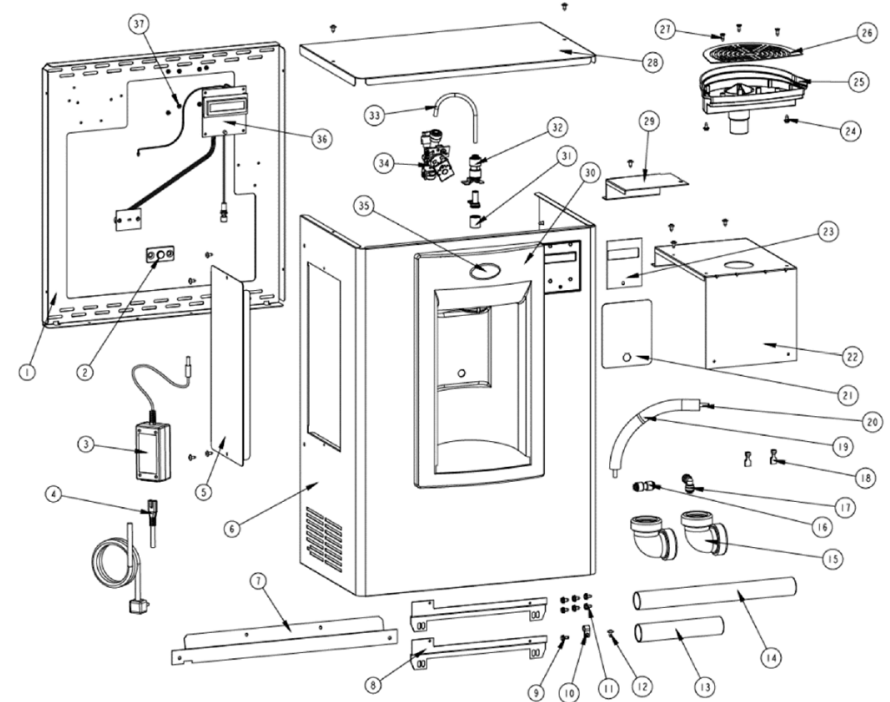
Plug the Elkay power cord into the wall outlet.

Test the contactless bottle filler by placing a water bottle into the alcove of the bottle filler. Check for leaks.

Install the cabinet top panel, filter access panel and Elkay cooler wrapper.



BOTTLE FILLER SPARE PARTS



ITEM	QTY	PART #	DESCRIPTION	ITEM	QTY	PART #	DESCRIPTION
1	1	041245-001	Frame	19	1	017681-003-SP	Insulation, Sponge Tube 9"
2	1	038027-001	Lens, IR Bottle Filler	20	1	030152-102-SP	Tube, PE Cut Length WHI 10"
3	1	038168-004	Cord Assy, DC Power Supply	21	1	038031-006	Label, Alcove Sensor
4	1	041207-001	Power Supply, 100-240VAC/12VDC	22	1	041244-001	Bracket, ENN Drain
5	1	041241-001	Panel, NN Filter	23	1	038031-005	Label, LCD Bezel
6	1	041238-001	Wrapper, ENN	24	2	026642-003	Screw, #8 Hex HD Tapping
7	1	041243-001	Bracket, Center ENN	25	1	036191-001	Drain, MSBF, Short
8	2	041242-001	Bracket, ENN Side	26	1	036192-001	Grille, Bottle Filler Drain
9	1	026670-001	Screw, Hex Head Machine	27	3	026675-003	Screw, Flat HD Tapping
10	1	018541	Clamp, Strain Relief	28	1	041239-001	Panel, ENN Top
11	6	026642-010	Screw, #10 Hex HD Tapping	29	1	041246-001	Bracket, ENN Filter Support
12	13	031875-003	Screw, Truss HD Tapping	30	1	036190-003	Alcove, EBF
13	1	036010-002	Waste, Tube 6.13"	31	1	038032-001	Flow Nozzle
14	1	036010-013	Waste, Tube 11.63"	32	1	028668-101	FTG, PP Reducing Union
15	2	A020967	1 1/2" Elbow, W/Nuts, 1 1/4"	33	1	030152-009-SP	Tube, PE White 7.5"
16	1	028605-101	FTG, PP Union 1/4"OD	34	1	038030-002	Solenoid Valve 12VDC
17	1	028481-101	FTG, PP Union Elbow WHT 0.25	35	1	031434-014	Nameplate, OASIS
18	2	0269223	Terminal, 0.250 Insulated STR	36	1	038026-002	Electronics ASSY, IR/LCD
				37	8	026824-026	Nut, Hex Nylon

Your Partner in Cool.

WARRANTY & SERVICE REGISTRATION

For All Aqua Cooler Water Cooler and Fountain Products

Effective July 2017

Aqua Cooler Pty Ltd warrants this appliance to the first purchaser as follows and subject to the stated conditions.

12 Month Comprehensive Warranty - Any defect in the appliance occurring within the first twelve months from the date of purchase will be rectified free of charge by Aqua Cooler Pty Ltd or by any authorised independent Service Agent.

24 Month Extended Warranty - Aqua Cooler Pty Ltd agrees to replace any part of the hermetically sealed refrigeration system which becomes inoperative in the two years following the first years comprehensive warranty. This extended warranty covers the compressor, condenser, and interconnecting refrigeration pipework. It excludes compressor relays, overloads and all other components of this appliance. This extended warranty does not include service, repair or labour costs or any pickup and/or freight charges. Aqua Cooler at its sole discretion may replace the cooler with a new or refurbished cooler of a similar age.

Warranty Exclusions

1. Any costs associated with the removal and reinstallation of repaired or replaced units.
2. Travel expenses to locations further than 100km from any Australian Capital City CBD or further than 100km of a registered Service Agent.
3. Damage to units where mains connected pressure is higher than 700kPa and a pressure limiting valve is not installed.
4. Where the unit is not installed as per installation instructions found within the supplied user manual.
5. The warranty does not cover defects occasioned by misuse, alterations, accident or where the water cooler has been stored on its side.

**FOR ANY CLAIMS UNDER THIS WARRANTY PLEASE CONTACT AQUA COOLER PTY LTD
PHONE: +61 (02) 9721 9300 OR EMAIL: support@aquacooler.com.au**


Thank you for your custom and we hope our product provides many years of fault free operation. To enable us to register your warranty and provide the best possible service should a problem occur, we recommend you fill out the section below and return it to us immediately.

This warranty is provided in addition to other rights and remedies you have under law: Our goods come with guarantees which cannot be excluded under the Australian Consumer Law. You are entitled to replacement or refund for a major failure and to compensation for other reasonably foreseeable loss or damage. You are also entitled to have the good repaired or replaced if the goods fail to be of acceptable quality and the failure does not amount to a major failure.

Warranty & Service Registration Form

Please fill in this form and mail to us or send via email to support@aquacooler.com.au. If this form is not completed and returned the warranty period will be deemed to have commenced from date of manufacture.

COMPANY NAME (if applicable):	
CONTACT NAME:	PHONE NUMBER:
ADDRESS:	
SUBURB:	POSTCODE:
MODEL NUMBER:	SERIAL NUMBER:
PURCHASED FROM:	
DATE OF PURCHASE:	



AQUA
COOLER

Your Partner in Cool.

Phone Numbers

Sales: 1300 278 226
Service: 1800 278 226

Address

U14, 2-12 Knobel Court
Shailer Park QLD 4128

Internet

www.aquacooler.com.au
info@aquacooler.com.au