



CASCADE Eco SERIES

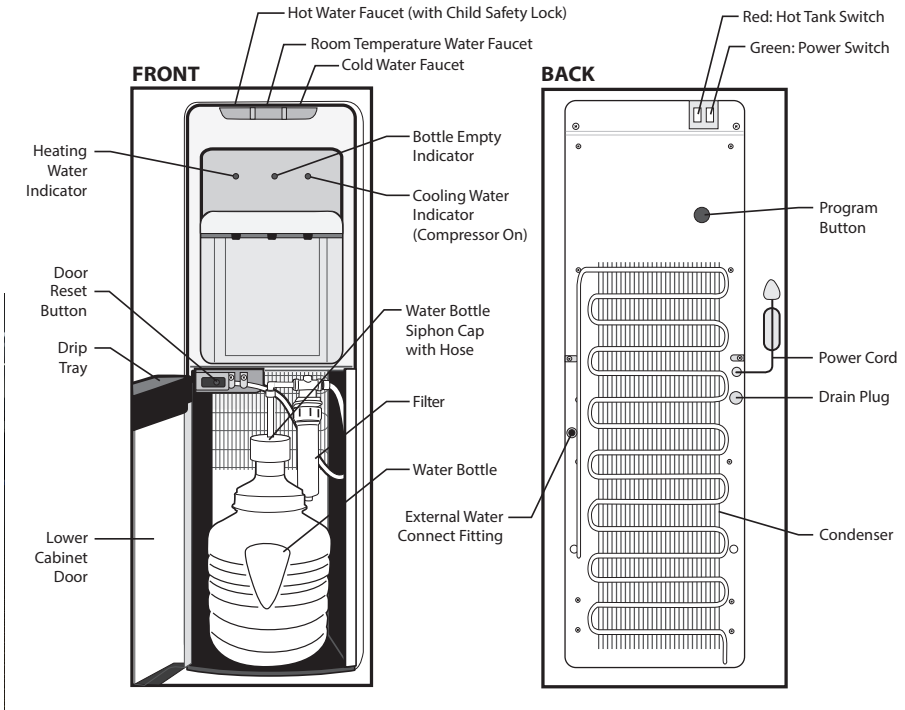
Usage and Care Manual

Model: CDTT-ECO

Your Partner in Cool.

AQUA
COOLER

PRODUCT DIAGRAM



TECHNICAL SPECIFICATIONS

Water Reservoir	Cold	3.3 L
	Hot	1.1 L
Housing Material	High impact polymer top, base and front panels	
Refrigeration	Uses R134A refrigerant	
Water Connections	Water Inlet	¼" quick-connect tube fitting
Thermostat Control	The thermostat is factory set	
Capacity	Cold	5.1 L/h
	Hot	7.9 L/h
Power Consumption	545 W	
Electrical	220-240 V, 50/60 Hz	
Warranty	Twelve month comprehensive coverage. Three year compressor replacement.	

IMPORTANT SAFETY INSTRUCTIONS

When using electrical appliances, basic safety precautions should be followed to reduce the risk of fire, electric shock, and injury to persons or property. Read all instructions before using any appliance.

1. Do not let hot water touch bare skin.
2. Keep combustible material such as furniture, bedding, pillows, clothes, and/or papers away from the back of the unit.
3. Do not operate this, or any other appliance, with a damaged power cord.
4. No other appliance should be plugged into the same outlet. Be sure that the plug is fully inserted into the outlet.
5. Do not run the power cord over carpeting or other heat insulators.
6. Do not cover the power cord.
7. Keep the power cord away from high traffic areas.
8. Do not submerge the power cord in water.
9. We do not recommend the use of extensions cords as they may overheat and cause a risk of fire.
10. Exercise caution and use reasonable supervision when the appliance is used by or near children.
11. Do not use your water dispenser outdoors.
12. Place the water dispenser away from direct sunlight and make sure that there is at least 10 cm of space between the back of your unit and wall. Keep a minimum of 5 cm on each side of your unit free.
13. Do not use this product to dispense anything other than water.
14. This appliance must be placed on an even and flat surface.
15. If the supply cord is damaged, the manufacturer, or one of its service agents or a similarly qualified person must replace it in order to avoid a hazard.
16. This water cooler must be positioned so that the plug is accessible.
17. Disconnect the plug from the outlet when not in use.
18. Remove power plug or disconnect from the main power source before servicing the appliance.

IMPORTANT INFORMATION ABOUT GROUNDING

- To provide additional protection from the risk of shock, this unit **MUST** be connected to a residual-current device (RCD) outlet at all times. Use of an extension cord will void any warranties.
- This appliance must be grounded. Improper use of the grounding plug can result in a risk of electric shock, causing serious injury and possibly death.
- This appliance is equipped with a power cord having a grounding wire with a grounding plug and must be connected into a properly-grounded, polarised outlet.
- Consult a qualified electrician if the grounding instructions are not completely understood, or if doubt exists as to whether the appliance is properly grounded. If the wall outlet is a standard, 2-prong outlet, it is your personal responsibility and obligation to have it replaced with a properly-grounded, 3-prong wall outlet.
- Do not under any circumstances cut or remove the third (ground) prong from the power cord plug. Do not use an adapter plug with this appliance.

UNPACKING THE WATER COOLER

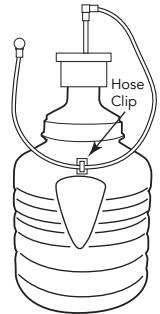
1. After unpacking the water cooler, wipe with a soft cloth.
2. Place the machine on a hard, flat surface. Make certain the unit is level. The unit should not be close to direct sunlight or other sources of heat.
3. It is best to place the water cooler in an area with good air circulation. Make sure there is at least 10 cm of space between the back of your cooler and the wall. Keep a minimum distance of 5 cm on each side of your water cooler.

WARNING - The drain cap on the back of the unit may become loose during shipping. Fasten the drain cap tightly before you start to operate the unit. If the drain cap is loose, the unit may leak and cause floor damage.

PREPARING FOR USE - BOTTLE

This model is different from traditional water coolers. The water bottle does not need to be placed up-side down on the top of the unit. The water bottle is placed in the lower cabinet of the unit, then a pump draws the water up to the dispenser.

- Always wash your hands first before handling the water bottle and stainless steel siphon tube.
- Clean the top of the bottle with a clean cloth.
- Clean the inside of the water bottle thoroughly with detergent and a clean cloth.
- Much like a new refrigerator with an ice maker or water dispenser, it is recommended to run 4 or 8 liters of water through the system before use.
- Fill up the water bottle and place inside the unit.

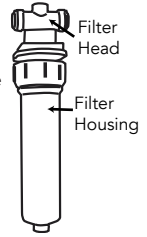


IMPORTANT NOTE - The Cascade Eco pump is heavy duty and designed to force water through a 1 micron filter. Stick the Hose Clip supplied to the front of the bottle (above the Aqua Cooler sticker) and loop excess siphon tube around to avoid it vibrating against the shell and creating excess noise.

PREPARING FOR USE - FILTER

It is a requirement to flush the activated carbon filter before use to prevent reduced flow, blockages and pump overheating.

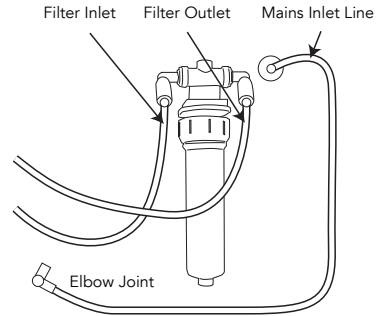
- Open the front door to gain access and twist the Filter Housing to disconnect it from the Filter Head.
- Unscrew the Filter Housing to open and expose the carbon block.
- Under running water, rinse the outside and inside of the carbon block for approximately one minute.
- Under running water, rinse the inside of the Filter Housing to remove any carbon fines.
- Re-screw the Filter Housing and re-connect the housing to the Filter Head inside the unit.



EXTERNAL SPRING WATER

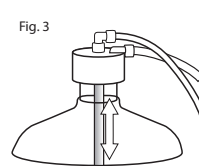
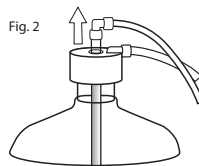
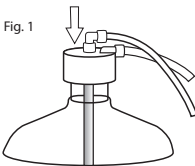
IMPORTANT NOTE - Refer to "Water Tube Connection Procedure" diagrams on page 6 for how to disconnect and reconnect 1/4" tube connectors.

- If you wish to supply your own water bottles via an external Spring Water supplier, you will need to bypass the included Cascade Eco 1 micron filter.
- To do this, disconnect the 1/4" tubing on the Filter Inlet and Filter Outlet. Connect these tubes to each other using the elbow joint supplied on the mains inlet line. This mains inlet line is redundant if feeding water via a bottle.



ADJUSTING THE SIPHON TUBE

1. Your new water cooler features an adjustable quick-connect system. For proper operation, make sure the connector is sealed tightly. (Fig. 1)
2. The connector can be removed easily for cleaning with warm soapy water. (Fig. 2)
3. Adjust the stainless-steel siphon tube up or down to accommodate your water bottle. (Fig. 3)



INSTALLATION PROCEDURE

IMPORTANT NOTE

This unit is equipped with a switch that turns the hot and cold tank ON and OFF. Make sure water can be dispensed from the hot faucet before switching the hot tank switch to ON.

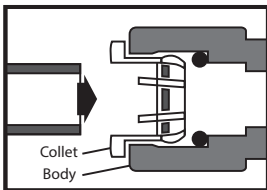
1. Make sure the water dispenser is not plugged into an electrical outlet.
2. Open the door of the lower cabinet.
3. Place full water bottle on floor. Remove the plastic cover over the mouth of the water bottle.
4. Place the stainless tube inside the bottle and place the water bottle cap firmly over the mouth of the water bottle.
5. Slide the siphon tube down until it reaches the bottom of the bottle. See page 5, "ADJUSTING THE SIPHON TUBE".
6. Slide the bottle inside the cabinet and close the lower cabinet door.
7. Read all safety precautions in this manual and then plug the water cooler into a grounded power outlet.
8. Before drinking, purge 2-3 litres of water from the cold and hot taps.
9. If you are not going to use hot water, turn the hot tank switch to OFF to conserve energy.



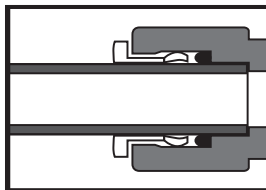
IMPORTANT NOTES

1. If there is not a secure connection between the hose cap and the connector on the water cooler, the water pump will operate but the water cooler will not dispense water. Make sure the hose is connected to the stainless tube correctly.
2. Please wait until the water pump stops running before using the unit. If the water tank is not full, no water will dispense from the cold water or hot water faucet.
3. Your new water cooler features an adjustable quick connect system. For proper operation, make sure the connector is sealed tight.
4. The connector can be removed easily for cleaning with warm soapy water.
5. The hose cap can be adjusted up and down to accommodate your water bottle.

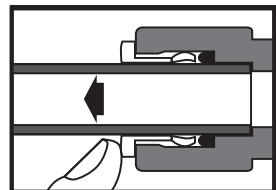
Water Tube Connection Procedure



To connect, push tube through collet ring into body.



Tube must sit fully past o-ring.



To disconnect, hold collet ring against body and pull tube out.

CONVERTING TO MAINS CONNECTED

- Your cooler is equipped with an open-door interlock system that will suspend all cooler functions while the access door is open. The access door must be shut for the cooler to operate correctly.
- If the inlet water pressure is above 500kPa, a pressure regulator must be installed in front of the unit's water inlet.
- Observe all local and state plumbing codes when making your external water supply connections.
- Connect from external water supply to the Cascade unit via ¼" tube at the rear of the unit.

IMPORTANT NOTE - This unit is equipped with a switch that turns the hot and cold tank ON and OFF. Make sure water can be dispensed from the hot faucet before switching the hot tank switch to ON.

IMPORTANT NOTE - Do not use water that is microbiologically unsafe or of unknown quality without adequate disinfection before or after the system.

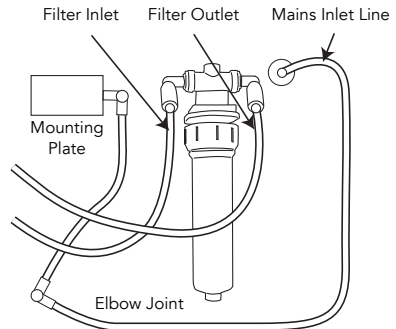
Unfiltered

Your Cascade Eco cooler comes ready to use with a direct water line. No further action is required if you do not wish to use the included filter unit within the Cascade Eco.

Filtered

Refer to "Water Tube Connection Procedure" diagrams for how to disconnect and reconnect ¼" tube connectors.

1. Ensure external water is switched off. Ensure power to the cooler is switched off. Flick the switch on the back of the unit from BOTTLE to POU.
2. Disconnect the ¼" tube from the Filter Inlet (left side) and the Filter Outlet (right side). These are only required for the bottle and pump, not for mains connection. Move them out of the way.
3. Follow the tubing that leads from the external water inlet to the Mounting Bracket. You will see a quick connect elbow joint in the middle of this tubing.
4. Disconnect the tubing at both sides of the elbow joint.
5. Connect the tube that leads from the external water inlet to the Filter Inlet.
6. Connect the tube that leads from the Mounting Bracket to the Filter Outlet.
7. Switch on your external water supply to the unit and check for leaks. If any leaks are present, switch off external water, disconnect and reconnect the fittings.



OPERATION




After the water bottle has been connected to the water cooler, the unit is ready for use. Turn the power switch on the back of the unit to ON. The water cooler will start running. First the unit will pump the water from the water bottle into the cooling and hot tanks, and then the unit's compressor will start to operate. Press the hot faucet to fill the hot tank. Once water flows from the hot faucet, the red hot tank switch found on back of the unit can be switched to ON. The first time the water cooler is used, you will have to wait at least one hour for cold water and 15 minutes for hot water.

- To dispense hot water, slide the hot water handle to the left side and then press the button all the way in.
- To dispense cook (ambient) water, press the center button.
- To dispense cold water, press the cold water button all the way in.

TROUBLESHOOTING

Problem	Possible Cause	Remedy
The unit does not dispense hot and cold water.	Unit is unplugged.	Plug the power cord into an outlet.
	Main power supply is off.	Re-establish main power supply.
	Damaged water dispenser.	Replace the dispenser.
	The water bottle cap is not attached properly to the connector on the water cooler.	Connect properly. There will be a give when the hose cap slides properly over the connector.
Unit does not dispense cold water.	The access door is open.	Close the access door and allow time for pump to fill the water reservoirs.
	Over consumption of cold water in a short time.	Wait for 15 minutes while the water cools and try again.
	System malfunction.	Contact Aqua Cooler service team.
	The ventilation around the unit is insufficient.	Ensure sufficient ventilation space around the unit.
Unit does not dispense hot water.	The temperature of the water in the water bottle is too high.	Ensure the unit is not placed in direct sunlight or close to other heat sources.
	Over consumption of hot water in a short time.	Wait for for 15 minutes while the water heats and try again.
Unit is noisy during operation.	System malfunction.	Contact Aqua Cooler service team.
	The appliance is not level.	Place the unit on a level, flat surface.
	Unit is touching other objects.	Ensure the unit is standing free of any surrounding objects.
Water leaks from the faucet.	The unit is noisy when switched on for the first time.	The units first drawer of water takes around one minute of pump operation. If pump noise persists, contact Aqua Cooler.
	The top portion of the faucet has come loose.	Tighten the top threaded portion of the faucet.
Water is dripping out of the water cooler and onto the floor.	The faucet has been damaged.	Contact Aqua Cooler service team.
	The hose connector is not connected properly.	Make sure the hose connector is properly connected.
	The inside hot or water tanks are leaking	Contact Aqua Cooler service team.
The water being dispensed has a strange taste.	The drain cap on the back is not fastened correctly.	Tighten the drain cap. If the sealing silicon material inside the drain cap is torn or damaged, then replcae with a new one.
	This is not uncommon with new water coolers. Do not worry, this is not dangerous to your health.	Clean the hose in the dishwasher (top rack only) or let it soak in dish soap. The strange taste useually goes away after the first bottle has been consumed.

INDICATOR LIGHTS

	When the indicator light is on, the unit is in the process of cooling water inside the cooler tank.
	When this indicator light is on, there is no water left in the water bottle and it needs to be replaced. Replace the water bottle, and close the door to reset the unit. The water cooler will work again and the indicator light will turn off.
	When this indicator light is on, the unit is in the process of heating water inside the heating tank.

CLEANING AND MAINTENANCE

For maximum efficiency and performance, your water dispenser requires cleaning on a regular basis (ie. every 6 months). Regular cleaning will prevent potential growth of bacteria and will maintain a hygienic environment.

Cleaning The Waterways

1. **IMPORTANT:** Turn OFF the hot tank switch before performing this procedure.
2. Clean the bottle with 50/50 vinegar and water.
3. Open the lower compartment storage door to prevent activation of the water pump. Take 8 cups (2 L) of water from the cold faucet. Make sure the power cord is plugged into electrical outlet.
4. Using a clean container, mix 4 cups (1 L) of white vinegar with 4 cups (1 L) of hot water. Place the container on the floor of the bottle storage compartment. Insert the stainless siphon tube into the cleaning solution, keeping the container upright, and close the storage door. The water pump will start automatically and draw the cleaning solution into the dispenser reservoirs. When all of the cleaning solution has been drawn, the pump will continue to operate for about 20 seconds, followed by a flashing yellow light. Open the storage door to cancel the flashing light. Allow the cleaning solution to sit inside for 20 minutes.
5. Follow the reservoir draining procedure below to remove the cleaning solution.
6. Flush the system using 16 cups (4 L) clean water (no cleaning solution). Follow the same steps outlined in #3. Press the hot faucet to fill up the hot tank. Once water flows from the hot faucet, allow pump to run until it stops. Place container under drain valve and remove drain cap and drain plug, allowing rinse water to drain. When the rinse water stops flowing, re-install the drain plug and drain cap and tighten.

Cleaning the Drip Tray

Pull the drip tray forward to dislodge it from the guides. Drain and clean the drip tray regularly to remove spotting and mineral deposits. Use a mild soap and water mixture or vinegar for tougher stains.

Cleaning the Condenser

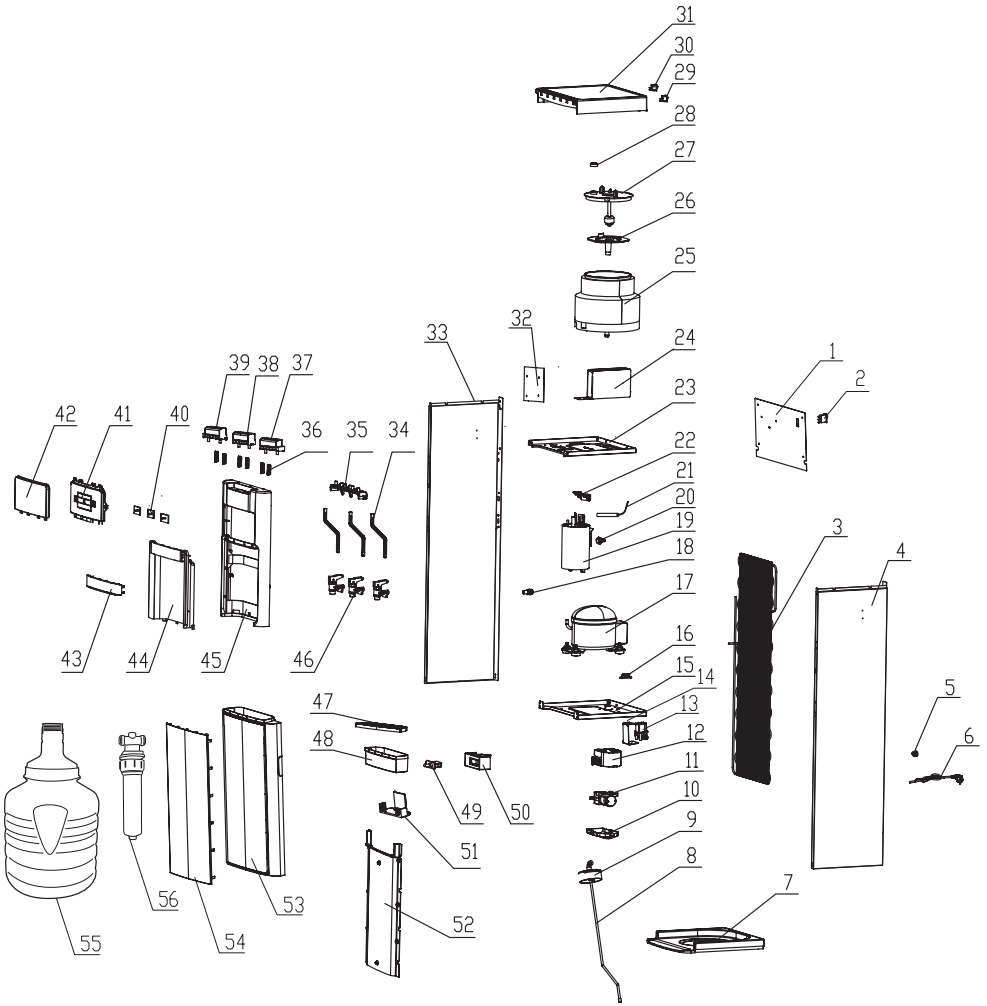
Vacuum or sweep away the dust from the condenser coils at the back of the dispenser to improve cooling and efficiency.

Draining the Reservoirs

1. Place a container under the dispensing spigots and press all 3 dispense buttons until water stops flowing.
2. Using a container, drain the remaining water from the internal reservoirs by unscrewing the drain cap and removing the drain plug from the drain valve located at the back of the unit.
3. Once water stops flowing, replace the drain plug and cap.

Note - Drain reservoirs before and after cleaning and when the dispenser is not used for a long period.

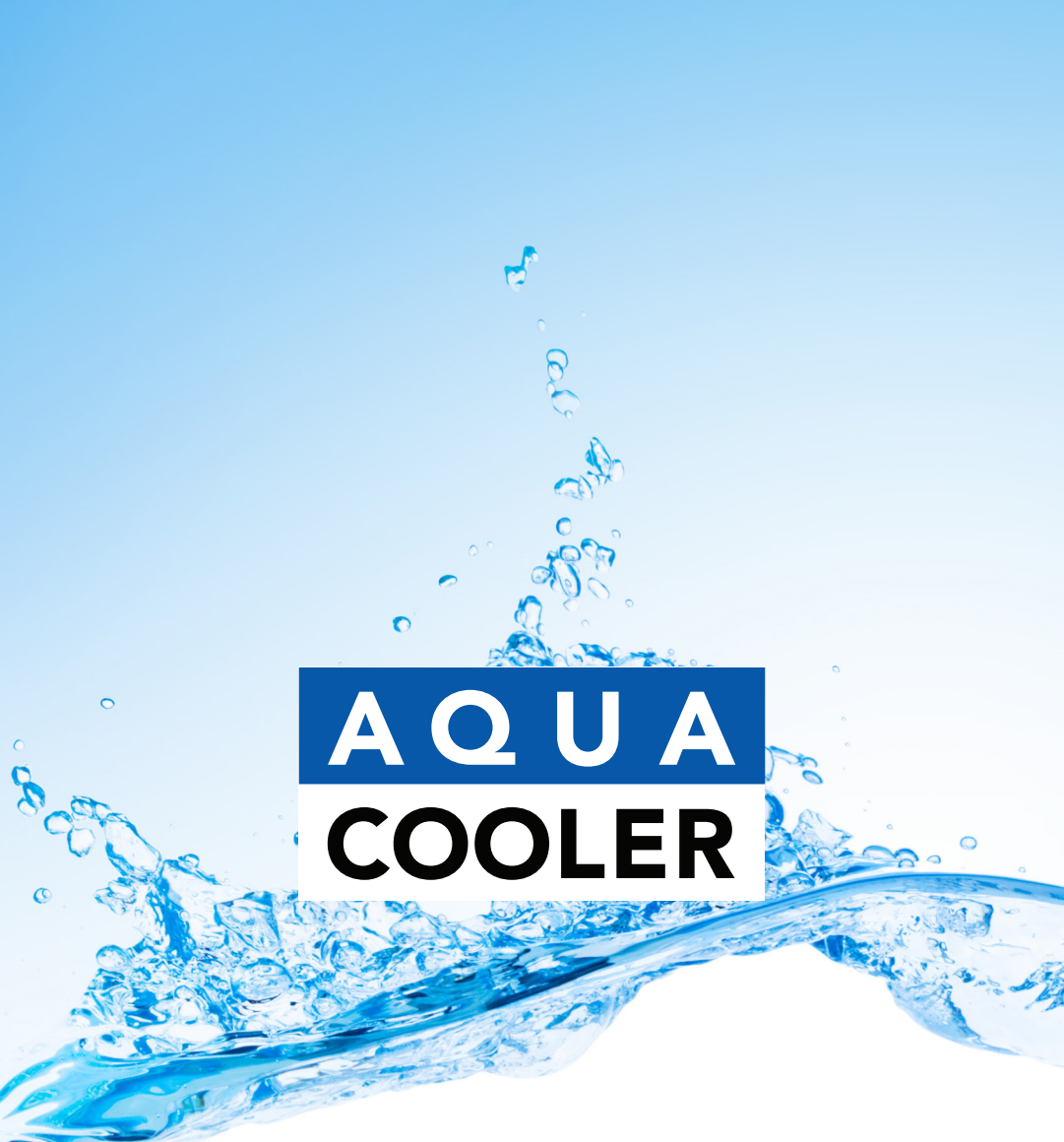
EXPLODED DIAGRAM



SPARE PART LIST

#	Description	Code
1	Top Back Board	SPC1
2	Change - Over Switch	SPC2
3	Condenser	SPC3
4	Right Side Board	SPC4
5	Power Cord Protector	SPC5
6	Power Cord	SPC6
7	Bottom Board	SPC7
8	Sst Tube	SPC8
9	Top Of Bottle Cover	SPC9
10	Pump Box Cover	SPC10
11	Pump	SPC11
12	Pump Box	SPC12
13	Electromagnetic Valve	SPC13
14	Bracket	SPC14
15	Middle Support Plate	SPC15
16	Power Cord Fixer - Bottom	SPC16
17	Compressor	SPC17
18	Drainage Subassembly	SPC18
19	Hot Tank Unit	SPC19
20	Manual Reset Temperature Controller (95 °C)	SPC20
21	Electronic Temperature Control	SPC21
22	Thermal Tank Support	SPC22
23	Cold Tank Supporting Plate	SPC23
24	Fix Box	SPC24
25	Cold Tank Units	SPC25
26	Diffluent Cover	SPC26
27	Cover	SPC27
28	Air Exchange Cap	SPC28
29	Heating Switch	SPC29
30	Cold Switch	SPC30
31	Top Cover	SPC31
32	Power Supply Pcb	SPC32
33	Left Side Board	SPC33
34	Connecting Rod	SPC34
35	Faucet Holder	SPC35
36	Spring	SPC36
37	Cold Water Button	SPC37
38	Normal Water Button	SPC38

#	Description	Code
39	Hot Water Buttn	SPC39
40	Indicator Light Pcb Unit	SPC40
41	Screen Fixed Plate	SPC41
42	Display Window	SPC42
43	Sst Panel Board	SPC43
44	Front Shell Edge	SPC44
45	Front Shell	SPC45
46	Faucet Unit	SPC46
47	Water Collecting Box Net	SPC47
48	Water Collecting Box	SPC48
49	Door Switch	SPC49
50	Door Switch Box	SPC50
51	Door Hook	SPC51
52	Decorative Door Panels	SPC52
53	Door	SPC53
54	Door Lining	SPC54
55	Water Bottle	SPC55
56	Filter Kit	SPC56
57	Filter Insert	SPC57

The logo for Aqua Cooler is centered on a background of splashing blue water. The word "AQUA" is written in white, uppercase letters on a dark blue rectangular background. Below it, the word "COOLER" is written in black, uppercase letters on a white rectangular background.

AQUA COOLER

Your Partner in Cool.

Phone Numbers

Sales: 1300 278 226
Service: 1800 278 226

Address

U14, 2-12 Knobel Court
Shailer Park QLD 4128

Internet

www.aquacooler.com.au
info@aquacooler.com.au