



FREE STANDING BOTTLE FILLER

Usage and Care Manual

Models: AC-P8FSZEBFY

Your Partner in Cool.

AQUA
COOLER

IMPORTANT SAFETY INSTRUCTION

BEFORE YOU START USING THIS WATER COOLER, PLEASE READ THE FOLLOWING INSTRUCTION CAREFULLY.

NOTE : All coolers should be sanitized prior to first use. The appliance is suitable for indoor and outdoor use in commercial & industrial locations.

- This appliance is not intended for use by persons (including children) with reduced physical, sensory or mental capabilities, or lack of experience and knowledge, unless they have been given supervision or instruction concerning use of the appliance by the person responsible for their safety.
- Children should be supervised to ensure that they do not play with the appliance.
- Cleaning and user maintenance shall not be made by children without supervision.
- Installation and servicing of the water dispenser should be carried out by an authorized employee of OASIS. OASIS will not be responsible for any injury, loss or damage of any kind sustained as a result of misuse of the water dispenser.
- This appliance must be earthed.
- Recommended ambient temperatures for correct operation of the unit are between 10°C and 32°C.
- Before cleaning the cooler, you should ensure that the unit is unplugged from the power supply.
- This product contains the hydro-fluorocarbon refrigerant R-134a which has a Global Warming Potential of 1,430.
- Do not approach within 60cm of the device while wearing a Hi-Vis safety vest – risk of accidental activation of water sensor.

WARNING: To avoid hazard due to instability of the appliance it must be fixed according the instructions.

WARNING: When positioning the appliance, ensure the supply cord is not trapped or damaged.

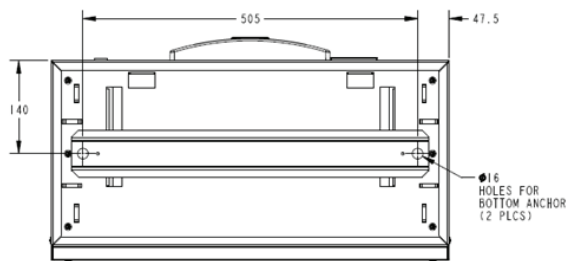
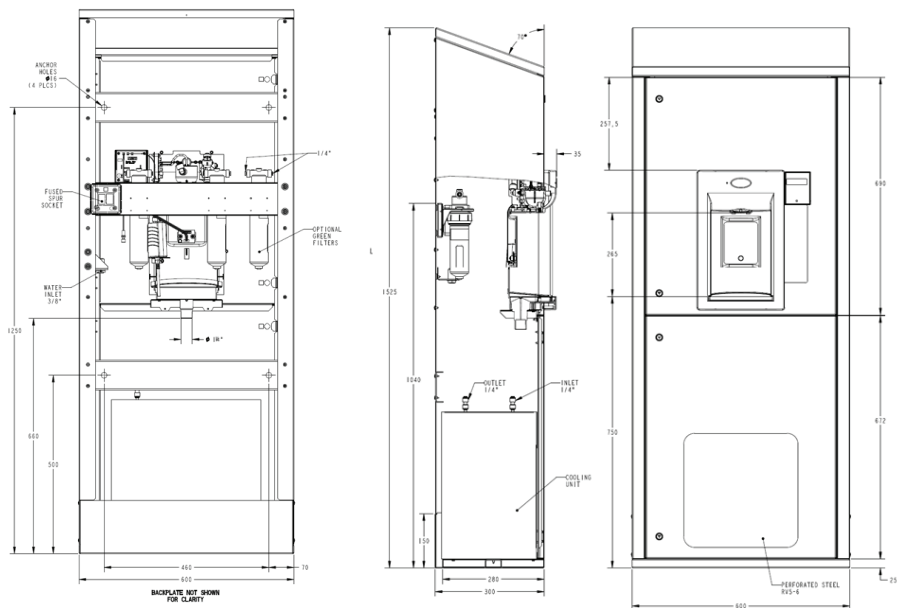
WARNING: Do not locate portable socket-outlets or portable power supplies at the rear of the appliance.

WASTE OF ELECTRICAL AND ELECTRONIC EQUIPMENT

The marking on the product or related information material indicates that the product should be disposed of in accordance with local legal requirements for waste electrical and electronic equipment. To avoid harm to the environment and human health from uncontrolled waste disposal, please separate the product from other types of waste and recycle responsibly to promote the reuse of material resources as a permanent practice. Users should contact the point of sale where they purchased the product or their local authority for information on where and how to safely recycle this product. Business users should contact their supplier and check the terms of the purchase contract. The products should not be disposed of with other commercial waste.

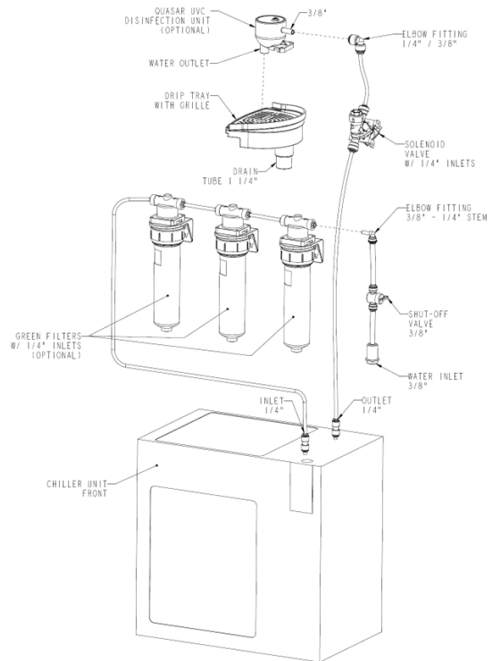
Your Partner in Cool.

PRODUCT DIAGRAM

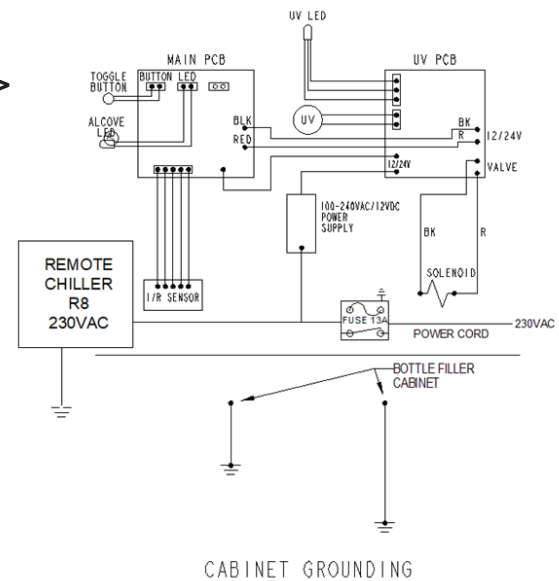


PRODUCT DIAGRAM CONT.

< Water Circuit



Electrical Diagram >



IMPORTANT INFORMATION ABOUT GROUNDING

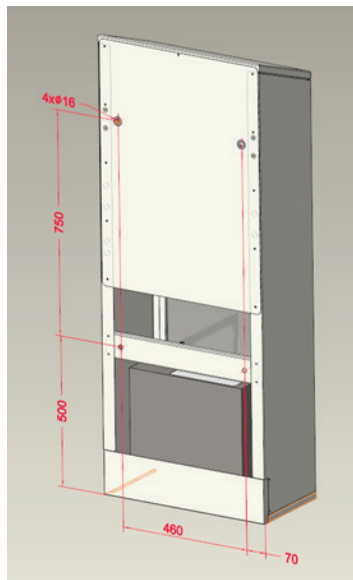
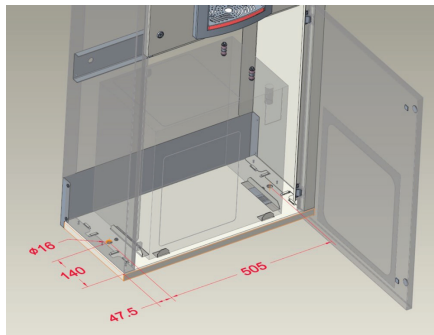
- To provide additional protection from the risk of shock, this unit must always be connected to a residual-current device (RCD) or a breaker. Use of joint cable should be avoided.
- This appliance must be grounded. Improper use of the grounding plug can result in a risk of electric shock, causing serious injury and possibly death.
- This appliance is equipped with the power terminal or power cord. A ground connection must be connected into a properly grounded, polarised outlet.
- Consult a qualified electrician if the grounding instructions are not completely understood, or if doubt exists as to whether the appliance is properly grounded.
- Do not under any circumstances cut or remove the third (ground) prong from the power cord plug (if provided). Do not use an adapter plug with this appliance.

INSPECTION

Inspect the cartons and various components for evidence of rough handling and concealed damage. Damage claims should be filed with the carrier.

INSTALLATION

Install cabinet assembly using 6 anchor fixing points shown below.



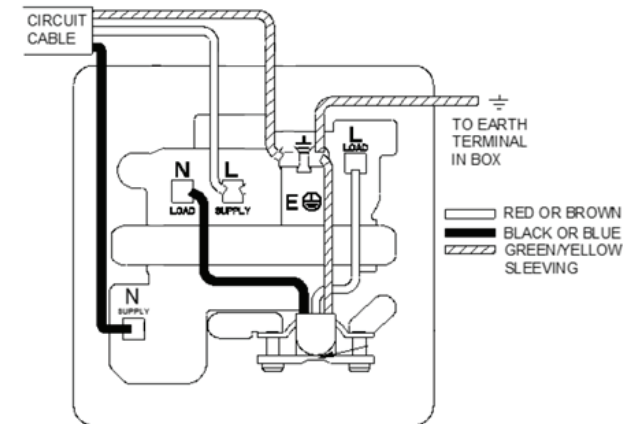
INSTALLATION CONT.

Connect drain tubes to the drip tray outlet 1 ¼" (tubes are not provided).

Connect water line to the 3/8" bulkhead fitting located at the back of the cabinet.

This outdoor bottle filler is designed to be operated at a water supply line pressure up to 100 PSI (690 kPa). A pressure regulator must be installed in front of the unit's water inlet if the pressure (including any possible pressure spikes) could exceed 100 PSI (690 kPa).

Remove metal clad spur cover by removing two fixing screws. Connect power according to the picture below and put the cover back. Make sure conductors are not trapped.



MAINTENANCE

The only maintenance operation required is the removal of dirt and lint from the condenser. Inspection should be made at 3 month intervals. When condenser requires cleaning, remove dirt and lint with a vacuum cleaner. Observance of this procedure will insure adequate air circulation through the condenser so operation is efficient and economical.

The compressor motor is equipped with an automatic reset protector which will disconnect the motor from the line in case of an overload.

This unit is equipped with a hermetically sealed compressor and requires no additional lubrication. The fan motor on this unit seldom needs oiling, but if required, a few drops of SAE 10 oil should be used.

SET UP GUIDE FOR BOTTLE FILLER ELECTRONICS

Factory default program settings are:

- Units: Gallons
- Unfiltered unit
- Flow meter = rate selected
- Filter Capacity = 1250 gallons (4731 liters) for a VersaFilter
- Bottle count = 0,5l (1 bottle)
- Flow rate = 1,2 GPM
- 20 s maximum dispense time

To change the program settings, follow these steps:

| DISPLAY | ACTION |
|---|---|
| 00000000 BOTTLES REUSED (Home Screen) | Depress button for 3 seconds to enter into the following menu settings and make changes. Note: at anytime it will exit menu and save settings when idle for 10 seconds (no button press) and revert back to Home Screen. |
| LTR/GAL GAL | Depress button 3 seconds to change from Gallons to Liters, or momentary press to advance to next menu. |
| UNFILT/FILT? UNFILT UNIT | Depress button 3 seconds to change from Unfiltered to Filtered unit, or momentary press to advance to next menu. |
| FLOW METER? RATE SELECTED | Depress button 3 seconds to change from Rate Selected to (Flow) Meter Enabled, or momentary press to advance to next menu. Not included on all models. |
| SELECT RATE 1.2 GPM UNIT | To change flow rate, momentarily depress button to change whole gallon digit. Hold button 3 seconds to advance to TENTHS of gallon digit. Depress momentarily to change the digit. Hold button 3 seconds to advance to the next menu. |
| RESET 00000000 GALLON CNT [LTR COUNT] | Depress button for 3 seconds to reset Gallon or Liter count, or momentary press to advance to next menu. |
| FILT CAPAC OF 1250 GAL [4731 LTR] | Depress button for 3 seconds to change filter capacity to 3000 GAL [11355 liters] for VersaFilter II or Galaxi green filter, or momentary press to advance to next menu. |
| 3 sec rule? 0.5L | Depress button for 3 seconds to switch from 0.5L bottle to 3 sec rule, or momentary press to advance to next menu. (The 3 Sec rule increases the bottle count based on a 3 second dispense.) |
| Reset 00000000 BOT COUNT | Depress button for 3 seconds to reset (Home Screen) BOTTLES REUSED count, or momentary press to advance to next menu. |
| Bot Filler Set_time: 20 s | Depress button for 3 seconds to change maximum dispense time to 10, 20 or 30 seconds, or momentary press to advance to next menu. |

MARKS

The appliance complies with applicable ACMA regulatory arrangements (Regulatory Compliance Mark) and WaterMark WMTS 105:2016.



WARRANTY & SERVICE REGISTRATION

For All Aqua Cooler Water Cooler and Fountain Products

Effective July 2017

Aqua Cooler Pty Ltd warrants this appliance to the first purchaser as follows and subject to the stated conditions.

12 Month Comprehensive Warranty - Any defect in the appliance occurring within the first twelve months from the date of purchase will be rectified free of charge by Aqua Cooler Pty Ltd or by any authorised independent Service Agent.

24 Month Extended Warranty - Aqua Cooler Pty Ltd agrees to replace any part of the hermetically sealed refrigeration system which becomes inoperative in the two years following the first years comprehensive warranty. This extended warranty covers the compressor, condenser, and interconnecting refrigeration pipework. It excludes compressor relays, overloads and all other components of this appliance. This extended warranty does not include service, repair or labour costs or any pickup and/or freight charges. Aqua Cooler at its sole discretion may replace the cooler with a new or refurbished cooler of a similar age.

Warranty Exclusions

1. Any costs associated with the removal and reinstallation of repaired or replaced units.
2. Travel expenses to locations further than 100km from any Australian Capital City CBD or further than 100km of a registered Service Agent.
3. Damage to units where mains connected pressure is higher than 700kPa and a pressure limiting valve is not installed.
4. Where the unit is not installed as per installation instructions found within the supplied user manual.
5. The warranty does not cover defects occasioned by misuse, alterations, accident or where the water cooler has been stored on its side.

**FOR ANY CLAIMS UNDER THIS WARRANTY PLEASE CONTACT AQUA COOLER PTY LTD
PHONE: +61 (02) 9721 9300 OR EMAIL: support@aquacooler.com.au**

Thank you for your custom and we hope our product provides many years of fault free operation. To enable us to register your warranty and provide the best possible service should a problem occur, we recommend you fill out the section below and return it to us immediately.

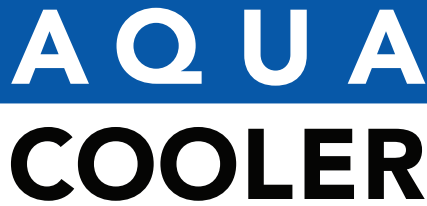
This warranty is provided in addition to other rights and remedies you have under law: Our goods come with guarantees which cannot be excluded under the Australian Consumer Law. You are entitled to replacement or refund for a major failure and to compensation for other reasonably foreseeable loss or damage. You are also entitled to have the good repaired or replaced if the goods fail to be of acceptable quality and the failure does not amount to a major failure.

Warranty & Service Registration Form

Please fill in this form and mail to us or send via email to support@aquacooler.com.au. If this form is not completed and returned the warranty period will be deemed to have commenced from date of manufacture.

| | |
|-------------------------------|----------------|
| COMPANY NAME (if applicable): | |
| CONTACT NAME: | PHONE NUMBER: |
| ADDRESS: | |
| SUBURB: | POSTCODE: |
| MODEL NUMBER: | SERIAL NUMBER: |
| PURCHASED FROM: | |
| DATE OF PURCHASE: | |

Your Partner in Cool.



AQUA COOLER

Your Partner in Cool.

Phone Numbers

Sales: 1300 278 226
Service: 1800 278 226

Address

U14, 2-12 Knobel Court
Shailer Park QLD 4128

Internet

www.aquacooler.com.au
info@aquacooler.com.au

m0002

This document is available digitally on our website at www.aquacooler.com.au/doc/m0002