

# WALL-RECESSED BOTTLE FILLER

Wall-recessed mains-connected bottle fillers

This wall-recessed, plumbed-in bottle filler comes with hands free dispensing and can produce 30L/h of cold drinking water.



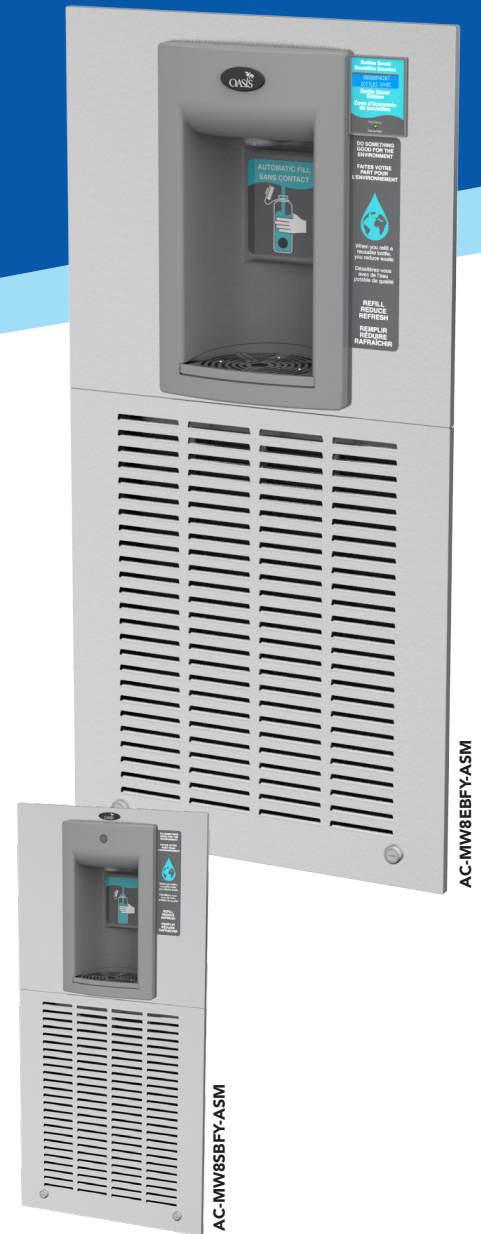
## KEY FEATURES

- Manual activation model (AC-MW8SBFY-ASM) with mechanically activated push button
- Electronic touch free activation (AC-MW8EBFY-ASM) with hands free activation with shut off timer
- Large alcove to fit most sports bottles with built-in drain (no drip tray to empty)
- High efficiency cooling system and refrigerant R-134a
- Energy-efficient refrigeration system powers 'ON' only when in use or if water temp increases during long period of standby
- Stainless steel finish with heavy duty steel frame
- Built-in 100 micron strainer stops particles before they enter the waterway
- Waterways are lead free in materials and construction
- Optional filtration system for taste, odour and chlorine reduction

These wall-recessed bottle fillers are refrigerated, dispensing 30L/h of crisply chilled water with hands-free or manual dispensing mechanisms and featuring a 100-micron strainer to stop particles entering the lead-free waterway.

The heavy-duty galvanised steel frame makes the unit extra durable, perfect for high-volume applications. All refrigerated fountains use R-134a refrigerant and have an efficient, highperforming refrigeration system.

All bottle fillers are made with proprietary Freshield technology. Freshield harnesses the natural bacteria-fighting power of silver by infusing it into a poly compound on moulded parts of the alcoves.

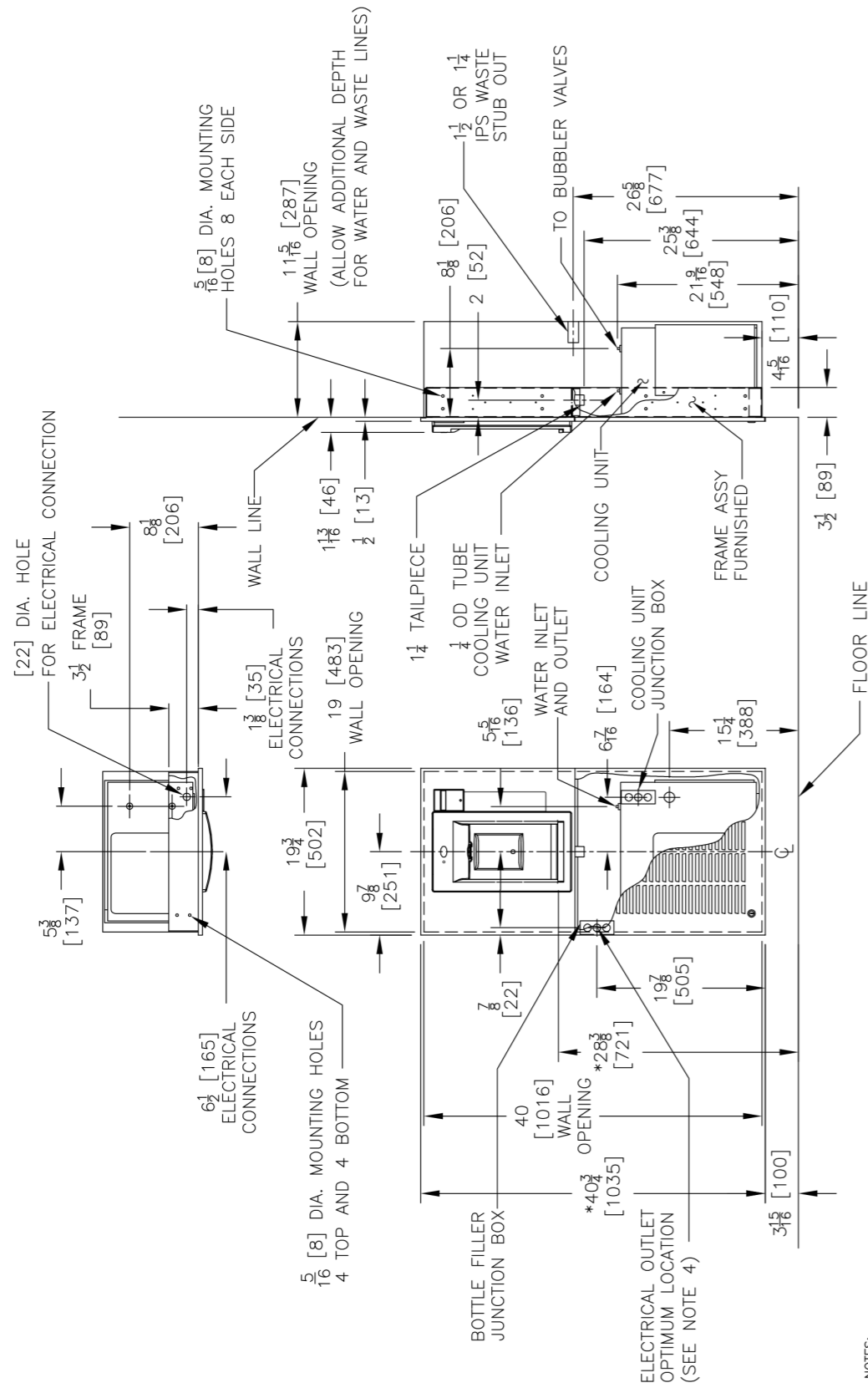


## Model Information

Model	AC-MW8EBFY-ASM	AC-MW8SBFY-ASM
<b>Activation</b>	Contactless (Infrared Sensor)	Manual (Push Button)
<b>Sensor Coverage</b>	Up to 5cm (approx.)	n/a
<b>Filtration</b>	Filter (optional), Built-in 100 micron strainer	
<b>Exterior</b>	Antimicrobial ABS Plastic, Brushed Stainless Steel	
<b>Chassis</b>	Heavy Duty Galvanised Steel	
<b>Dimensions</b>	1035(H) x 502(W) x 46(D) (287 recessed)	
<b>Alcove Height</b>	265mm	
<b>Net Weight</b>	35kg	
<b>Power Supply</b>	220-240V, 50/60 Hz	
<b>Cooling Performance</b>	30 LPH - Rated Capacity & Base Rate - (10°C in 21°C amb. temp.)	
<b>Full Load Amps</b>	2.2 A	
<b>Rated Watts</b>	347 W	
<b>Country of Origin</b>	Mexico	
<b>Certifications</b>	WaterMark, ANSI/NSF 61, CABO/ANSI A117.1, ADA, CE (LVD, EMC, RoHS)	
<b>Warranty</b>	1 Year Full, 2 Years Parts Only	

Your Partner in Cool.

**AQUA  
COOLER**



NOTES:

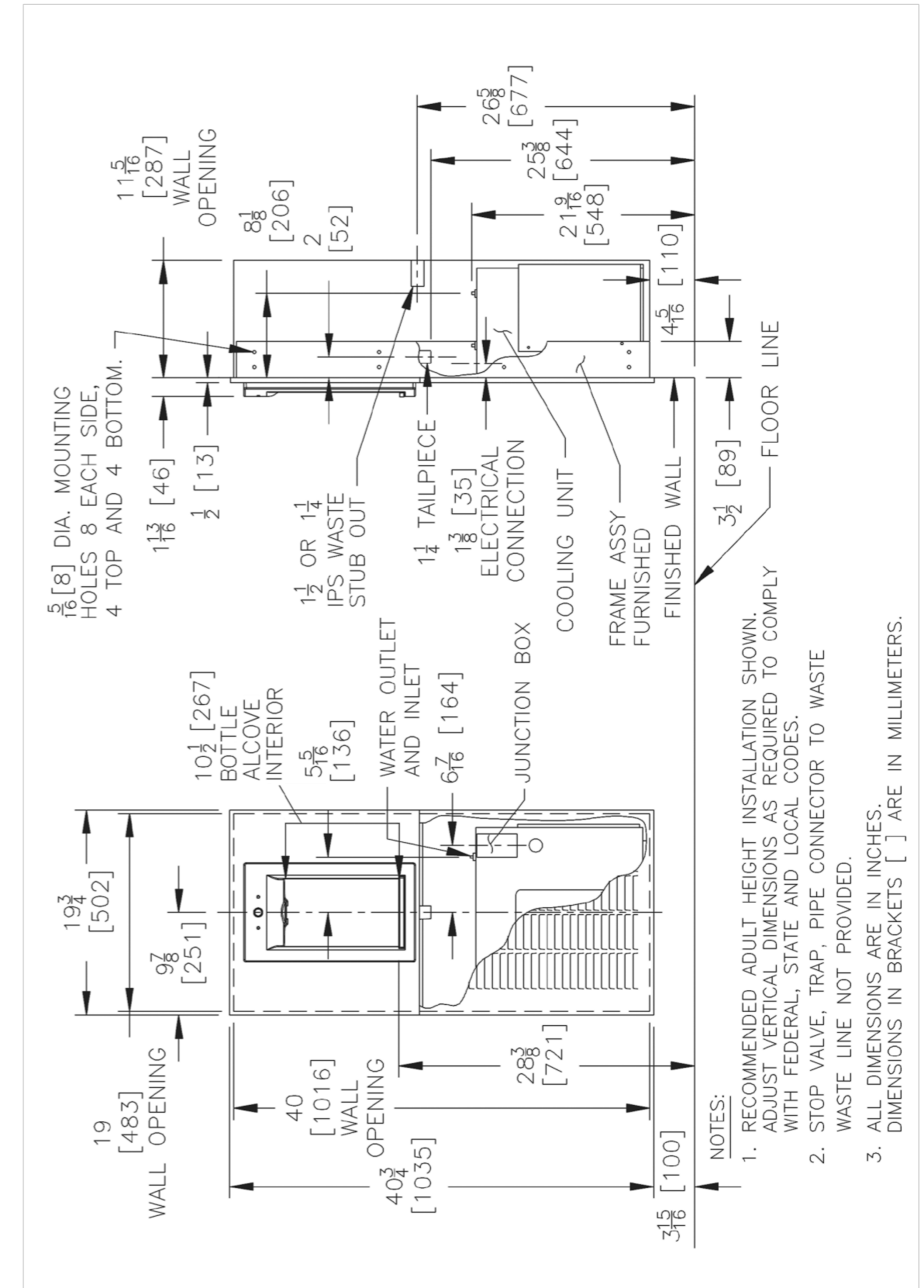
\*1. RECOMMENDED ADULT HEIGHT INSTALLATION SHOWN. ADJUST VERTICAL DIMENSIONS, AS REQUIRED TO COMPLY WITH FEDERAL, STATE AND LOCAL CODES.

2. STOP VALVE, TRAP, PIPE CONNECTOR TO WASTE LINE NOT PROVIDED.

3. SHORT RADIUS TRAP REQUIRED.

4. ALL DIMENSIONS ARE IN INCHES. DIMENSIONS IN BRACKETS [ ] ARE IN MILLIMETERS.

4. 115V GROUNDED NORTH AMERICAN DUPLEX RECEPTACLE REQUIRED. THIS DRINKING WATER COOLER IS INTENDED TO BE CONNECTED TO A 20A MINIMUM GROUND FAULT CIRCUIT INTERRUPTING (GFCI) DEVICE TO MEET UL REQUIREMENTS.

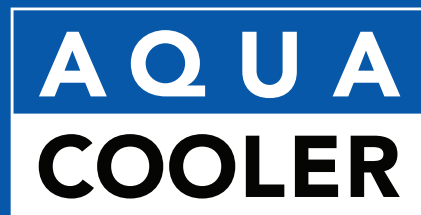


NOTES:

1. RECOMMENDED ADULT HEIGHT INSTALLATION SHOWN. ADJUST VERTICAL DIMENSIONS AS REQUIRED TO COMPLY WITH FEDERAL, STATE AND LOCAL CODES.

2. STOP VALVE, TRAP, PIPE CONNECTOR TO WASTE WASTE LINE NOT PROVIDED.

3. ALL DIMENSIONS ARE IN INCHES. DIMENSIONS IN BRACKETS [ ] ARE IN MILLIMETERS.



Your Partner in Cool.