



OASIS SERIES

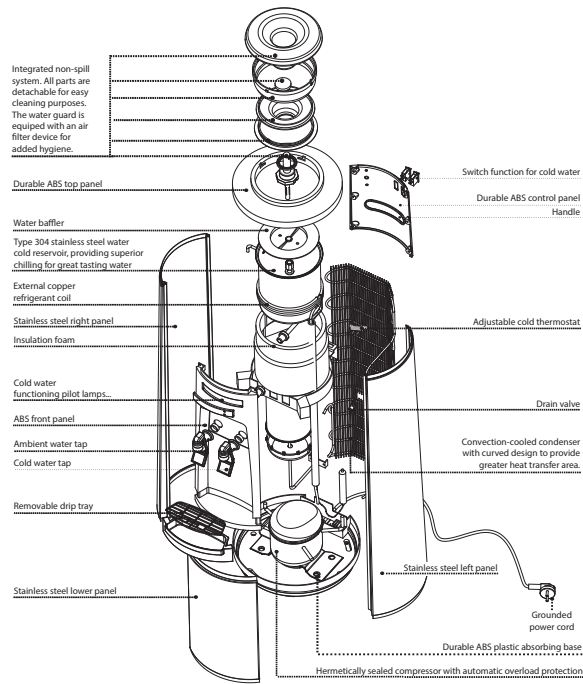
Usage and Care Manual

Models: OMCC, OMCCF, OBCC and OBHC.

Your Partner in Cool.

AQUA
COOLER

PRODUCT DIAGRAM



Note: Exploded Diagram is of Bottled Cooler

IMPORTANT SAFETY INSTRUCTIONS

When using electrical appliances, basic safety precautions should be followed to reduce the risk of fire, electric shock and injury to persons or property. Read all instructions before using any appliance.

1. Keep combustible material such as furniture, bedding, pillows, clothes and/or papers away from the back of the unit.
2. Do not operate this, or any other appliance, with a damaged power cord.
3. No other appliance should be plugged into the same outlet. Be sure that the plug is fully inserted into the outlet.
4. Do not run the power cord over carpeting or other heat insulators.
5. Do not cover the power cord.
6. Keep the power cord away from high traffic areas.
7. Do not submerge the power cord in water.
8. We do not recommend the use of extension cords as they may overheat and increase the risk of fire.
9. Exercise caution and use reasonable supervision when the appliance is used by or near children.
10. Make sure that there is at least 75 mm of space between the back of unit and wall. Keep a minimum of 75 mm on each side of unit free.
11. Do not use this product to dispense anything other than water.
12. This appliance must be placed on an even and flat surface.
13. If the supply cord is damaged, the manufacturer, one of its service agents or a similarly qualified person must replace it in order to avoid hazard.
14. This water cooler must be positioned so the plug is accessible.
15. Disconnect the plug from the outlet when not in use.
16. Remove power plug or disconnect from main power source before servicing the appliance.
17. Warranty will be voided if installation is not carried out as detailed in this instruction manual.
18. The compressor motor is equipped with an automatic reset protector which will disconnect the motor from the line in case of an overload.

TECHNICAL SPECIFICATIONS

Water Reservoir	Cold	4 L	
	Hot	1.2 L	
Housing Material	Plastic with stainless steel side panels and corner peices		
Refrigeration	Uses R134A refrigerant		
Water Connections	Water Inlet	¼" push-fit (OMCC/OMCCF), bottle (OBCC/OBHC)	
Thermostat Control	The thermostat is factory set		
Capacity	Cold	5 L/h	
	Hot	2 L/h	
Power Consumption	Main-Connected	Cold	85 W
		Hot	400-800 W
	Bottled	Cold	100 W
		Hot	400-800 W
Electrical	220-240 V, 50/60 Hz		
Warranty	Twelve month comprehensive coverage, additional twenty-four month compressor replacement.		

IMPORTANT INFORMATION ABOUT GROUNDING

- To provide additional protection from the risk of shock, this unit MUST be connected to a residual-current device (RCD) outlet at all times. Use of an extension cord will void any warranties.
- This appliance must be grounded. Improper use of the grounding plug can result in a risk of electric shock, causing serious injury and possibly death.
- This appliance is equipped with a power cord having a grounding wire with a grounding plug and must be connected into a properly-grounded, polarised outlet.
- Consult a qualified electrician if the grounding instructions are not completely understood, or if doubt exists as to whether the appliance is properly grounded. If the wall outlet is a standard, 2-prong outlet, it is your personal responsibility and obligation to have it replaced with a properly-grounded, 3-prong wall outlet.
- Do not under any circumstances cut or remove the third (ground) prong from the power cord plug. Do not use an adapter plug with this appliance.

UNPACKING THE WATER COOLER

1. After unpacking the water cooler, wipe with a soft cloth. Check the unit for evidence of rough handling.
2. Place the machine on a hard, flat surface. Make certain the unit is level. The unit should not be close to sources of heat otherwise performance may be affected.
3. It is best to place the water cooler in an area with good air circulation. Make sure there is at least 75 mm of space between the back of your fountain and the wall.

INSTALLATION PROCEDURE

The installation must be in accordance with AS/NZS 3500.1 and AS/NZS 3500.2, as well as the instructions below. The unit is supplied with an Installation kit for connection to the mains water supply. This kit includes a) Dual Check Pressure Limiting Valve b) 1/2" female BSP to 1/4" Speed fit adapter, 1 metre of 1/4" tube, and red locking clips.

For OMCC and OMCCF models:

1. Ensure proper ventilation be allowing 75 mm clearance on each side of the cooler
2. Minimum water pressure is 100 kPa and maximum is 700 kPa.
3. A pressure limiting valve is included inside the packaging and acts as the "end connection device". The pressure limiting valve needs to be installed between the mains supply water and the rear water inlet of the water cooler.
4. The recommended maximum water inlet temperature is 38°C. Cooling performance may be affected in high ambient conditions or high water inlet temperatures.
5. Connect ¼" tubing from mains connection fitting (supplied) to the included pressure limiting valve inlet. Then connect another length of 1/4" tube from the outlet of the pressure limiting valve to the water inlet fitting on the rear of the water cooler.
6. Turn on water supply and let tank fill with water for approximately 2 minutes.
7. Hold down taps until steady stream of water appears.
8. Check all connections from mains supply through to the rear of the cooler for water leaks.
9. Flush fresh mains water through unit for five minutes to ensure no leaks.
10. Plug the cooler into the building electrical supply and for the cook and cold model: Switch the cold water switch to the ON position.

For OBCC and OBHC model:

1. Ensure proper ventilation be allowing 75 mm clearance on each side of the fountain.
2. Place water bottle on top of unit and allow tank to fill.
3. Hold down the taps until a steady stream of water comes from the tap.
4. Check all connections for water leaks.
5. Flush fresh water through unit for five minutes to ensure any residual water from testing is cleared.
6. Plug the cooler into the building electrical supply and for the cook and cold model: Switch to the ON position. The first time the water cooler is used, you will have to wait at least 45 minutes for cold and hot water.

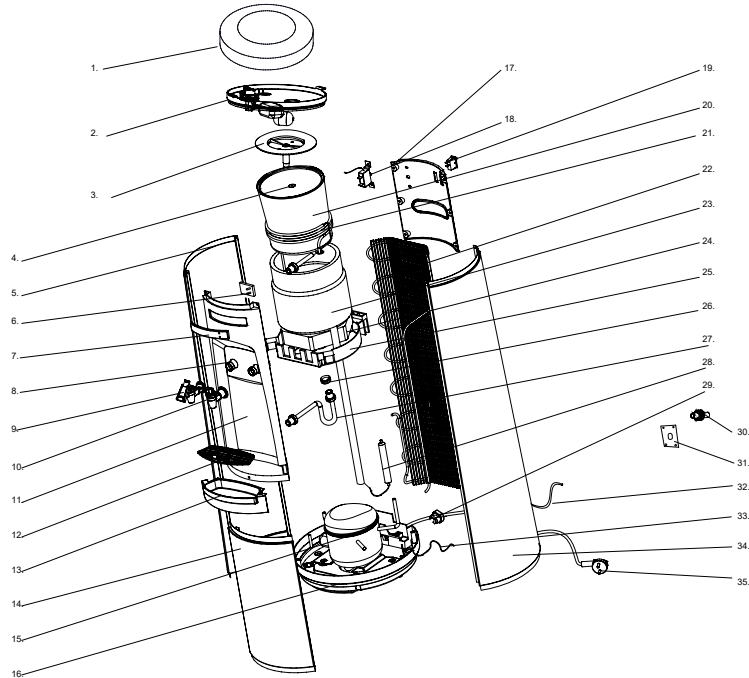
REMOVING FROM SERVICE

1. Disconnect the power supply cord.
2. Disconnect the water supply.
3. Remove the water inside the drip tray.
4. Drain all the water from the tank using the taps.

TROUBLESHOOTING

Problem	Possible Cause	Remedy
The unit does not dispense hot and cold water.	Unit is unplugged or main power supply is off.	Plug the power cord into an outlet and re-establish main power supply.
	The fuse has blown.	Replace the blown fuse.
	Damaged water dispenser.	Contact Aqua Cooler service team.
Unit does not dispense cold water.	The water bottle cap is not attached properly to the connector on the water cooler.	Connect properly. There will be a give when the hose cap slides properly over the connector.
	Over consumption of cold water in a short time.	Wait for 15 minutes while the water cools and try again.
	System malfunction.	Contact Aqua Cooler service team.
	The ventilation around the unit is insufficient.	Ensure sufficient ventilation space around the unit.
Unit does not dispense hot water. (Hot water model only)	The temperature of the water in the water bottle is too high.	Ensure the unit is not placed in direct sunlight or close to other heat sources.
	The cold water switch is in the OFF position.	Switch the cold water switch to the ON position.
	Cold water baffle is not set properly.	Secure the cold water baffle in the cold tank.
Unit does not dispense hot water. (Hot water model only)	Over consumption of hot water in a short time.	Wait for 15 minutes while the water heats and try again.
	System malfunction.	Contact Aqua Cooler service team.
Unit is noisy during operation.	The hot water switch is in the OFF position.	Switch the hot water switch to the ON position.
	The appliance is not level.	Place the unit on a level, flat surface.
Water leaks from the faucet.	Unit is touching other objects.	Ensure the unit is standing free of any surrounding objects.
	The top portion of the faucet has come loose.	Tighten the top threaded portion of the faucet.
Water is dripping out of the water cooler and onto the floor.	The faucet has been damaged.	Contact Aqua Cooler service team.
	The hose connector is not connected properly.	Make sure the hose connector is properly connected.
	Tank is leaking	Contact Aqua Cooler service team.
The water being dispensed has a strange taste.	Crack or pin holes in the bottle.	Replace with a new bottle.
	This is not uncommon with new water coolers. Do not worry, this is not dangerous to your health.	Clean the tank. The strange taste usually goes away after the first bottle has been consumed.

EXPLODED DIAGRAM AND SPARE PART LIST



Description	Code
Top cover	SPO1
Float	SPO2
Water baffle	SPO3
Screw for cold tank	SPO4
Left panel	SPO5
Led lamp panel	SPO6
Cover upper panel(Logo)	SPO7
Water tap airproof ring	SPO8
Ambient water tap	SPO9
Cold water tap	SPO10
Front upper panel	SPO11
Water tray grill	SPO12
Water tray	SPO13
Lower panel	SPO14
Compressor	SPO15
Bottom plate	SPO16
Control panel	SPO17
Thermostat	SPO18

Description	Code
Switch	SPO19
Cold tank	SPO20
Evaporator	SPO21
Condenser	SPO22
Cold tank body sponge	SPO23
Cold tank bottom sponge	SPO24
Middle plate	SPO25
O-ring for connector tube with cold tank	SPO26
U outlet tube	SPO27
Dryer	SPO28
AC power cord	SPO29
Water joint	SPO30
Joint fixed plate	SPO31
Cable enter tube	SPO32
Wiring	SPO33
Right panel	SPO34
AC power plug	SPO35

CLEANING AND MAINTENANCE

- Remove or disconnect power before performing any maintenance or servicing the product.
- Never use detergent or chemicals to clean the water tanks.
- If dust or other exterior substance has accumulated on the condenser, wipe off with water-soaked soft cloth.
- Do not directly spray water on the surface of the product. Wipe the front and back of the product with water-soak soft cloth.
- **To Clean OMCC and OMCCF models:** Undo top two screws at the back of the cooler and take of lid. Add 50 ml of household vinegar to the reservoir and let stand for 5 minutes. Scrub reservoir using a non-abrasive scouring sponge and drain solution through the taps. Refill the reservoir with clean tap water and rinse thoroughly. Drain and repeat at least 3 times or until it runs clear. Reassemble lid.
- **To Clean OBCC and OBHC model:** Remove bottle and spike. Add 50 ml of household vinegar to the cold tank reservoir and let stand for 5 minutes. Scrub cold tank reservoir using a non-abrasive scouring sponge and drain solution through the taps. Refill the reservoir with clean tap water and rinse thoroughly. Drain and repeat at least 3 times or until it runs clear on both hot and cold tank reservoir. Reassemble spike and replace bottle.
- After cleaning the product, ensure it is completely dried before beginning use again.
- The unit requires no additional lubrication.
- Aqua Cooler recommends the water cooler is cleaned every 6 months, ensuring there is no blockage in the condenser or in the back of the unit. Please remove all potentially harmful factors to prevent any scratch or damage to the unit.
- If customers require the unit's spare parts information, please contact the Aqua Cooler Service Department for further assistance. The direct line is located on the back of this manual.

Recommended 6 monthly service

Full Inspection of unit

- Functionality of taps, drip trays, refrigeration units checked
- Full inspection of hoses and internal fittings
- Inspection and testing of refillable bottle and float valve assembly (OBCC & OBHC)
- Check and adjust filter housing (if applicable) (OMCCF)
- Incoming pressure limiting valve inspected and changed where required (OMCC & OMCCF)
- Adjustment of the thermostat if required and operational testing performed

Thorough clean and sanitise unit

- Full internal and external clean of the unit performed with drink-safe cleaner
- Sell-filling systems and reservoirs are emptied and sanitised to maintain impeccable hygiene standards
- Ensured cleanliness of taps, drip trays and exterior of unit

Replacement of filter cartridges (filters sold separately)

- Filters are flushed and water is run through the taps to expel any carbon fines and air pockets
- Ceramic disk inspected and replacement (OBCC & OBHC)
- Taste test and visual inspection is conducted to ensure units provide the highest quality drinking water

WARRANTY AND SERVICE REGISTRATION

For All Aqua Cooler Water Cooler and Fountain Products

Effective July 2017

Aqua Cooler Pty Ltd warrants this appliance to the first purchaser as follows and subject to the stated conditions.

12 Month Comprehensive Warranty - Any defect in the appliance occurring within the first twelve months from the date of purchase will be rectified free of charge by Aqua Cooler Pty Ltd or by any authorised independent Service Agent.

24 Month Extended Warranty - Aqua Cooler Pty Ltd agrees to replace any part of the hermetically sealed refrigeration system which becomes inoperative in the two years following the first years comprehensive warranty. This extended warranty covers the compressor, condenser, and interconnecting refrigeration pipework. It excludes compressor relays, overloads and all other components of this appliance. This extended warranty does not include service, repair or labour costs or any pickup and/or freight charges. Aqua Cooler at its sole discretion may replace the cooler with a new or refurbished cooler of a similar age.

Warranty Exclusions

1. Any costs associated with the removal and reinstallation of repaired or replaced units.
2. Travel expenses to locations further than 100km from any Australian capital city CBD or further than 100km of a registered Service Agent.
3. Damage to units where mains connected pressure is higher than 700 kPa and a pressure limiting valve is not installed.
4. Where the unit is not installed as per installation instructions found within the supplied user manual.
5. The warranty does not cover defects occasioned by misuse, alterations, accident or where the water cooler has been stored on its side.

FOR ANY CLAIM UNDER THIS WARRANTY PLEASE CONTACT AQUA COOLER PTY LTD

PHONE: +61 (02) 9721 9300 OR EMAIL: support@aquacooler.com.au

Thank you for your custom and we hope our product provides many years of fault free operation. To enable us to register your warranty and provide best possible service should a problem occur, we recommend you fill out the section below and return it to us immediately.

This warranty is provided in addition to other rights and remedies you have under law. Our goods come with guarantees which cannot be excluded under the Australian Consumer Law. You are entitled to replacement or refund for a major failure and to compensation for other reasonably foreseeable loss or damage. You are also entitled to have the goods repaired or replaced if the goods fail to be of acceptable quality and the failure does not amount to a major failure.

Warranty and Service Registration Form

Please fill in this form and mail to us or send via email to support@aquacooler.com.au. If this form is not completed and returned the warranty period will be deemed to have commenced from date of manufacture.

COMPANY NAME (if applicable):

CONTACT NAME:

PHONE NUMBER:

ADDRESS:

SUBURB:

POSTCODE:

MODEL NUMBER:

SERIAL NUMBER:

PURCHASED FROM:

DATE OF PURCHASE:


MARKS



Spec No. WMTS 105:2016
SAI GLOBAL
WMK26317 (Lic. No.)

The appliance is comply with applicable ACMA regulatory arrangements (Regulatory Compliance Mark) and WaterMark WMTS 105:2016.

Your Partner in Cool.



AQUA
COOLER

Your Partner in Cool.

Phone Numbers

Sales: 1300 278 226
Service: 1800 278 226

Address

U14, 2-12 Knobel Court
Shailer Park QLD 4128

Internet

www.aquacooler.com.au
info@aquacooler.com.au