



ODYSSEY SERIES

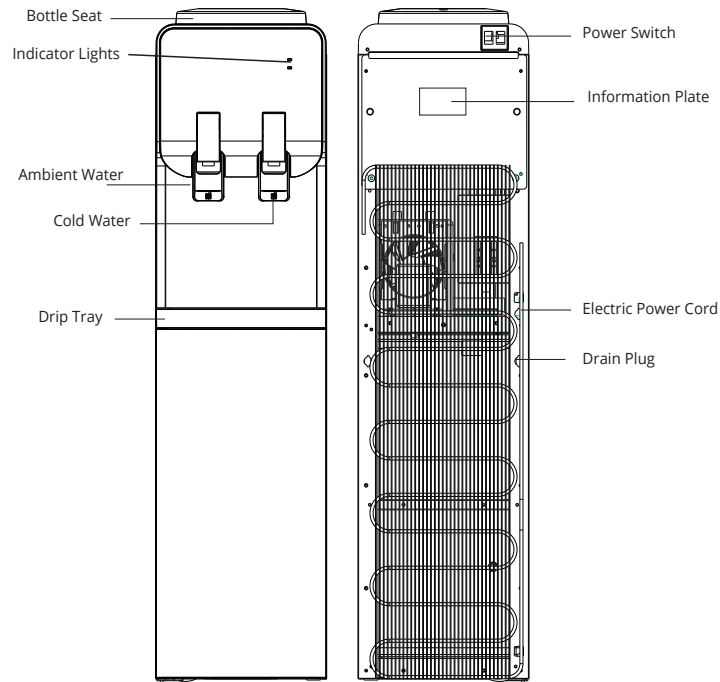
Usage and Care Manual

Models: ODYBCC-WHT, ODYBCC-BLK

Your Partner in Cool.

AQUA
COOLER

PRODUCT DIAGRAM



TECHNICAL SPECIFICATIONS

Water Reservoir	Cold	2.5 L	
Housing Material	Plastic with steel side panels and corner pieces		
Refrigeration	Uses R134A refrigerant		
Thermostat Control	The thermostat is factory set		
Capacity	Cold	2 L/h	
Power Consumption	Bottled	Cold	85W
Electrical	220V-240V, 50Hz		
Warranty	Twelve month comprehensive coverage. Three year compressor replacement.		

IMPORTANT SAFETY INSTRUCTIONS

When using electrical appliances, basic safety precautions should be followed to reduce the risk of fire, electric shock, and injury to persons or property. Read all instructions before using any appliance.

1. Make sure to have poured water before plugging and switching the appliance ON. If the dispenser is turned ON with an empty water tank, it can be damaged.
2. When you are ready to move the water cooler, do not tilt more than 45° to avoid damage to the compressor.
3. Always install the dispenser indoors, on a flat surface and at a distance no less than 15cm from the back wall.
4. Keep this appliance away from high temperatures and in a dry and ventilated place. Never install it in the open air or under rain or direct sunlight.
5. If the appliance is not going to be used for a long period of time, unplug it and drain all water in its interior.
6. Before the first use and after a long period of not using it, the water tank and water pipes should be cleaned well. If possible, they should be disinfected.
7. Wash and disinfect the system every 3-6 months with a suitable cleaner and according to its instructions for use.
8. Do not pull out the cable to unplug. Do not turn ON and OFF the appliance by connecting it and disconnecting it from the source of electricity.
9. Do not clean the outside of the appliance with water to avoid electric shock. Clean it with a soft cloth.
10. If you are not using the appliance for a long period of time or during the night, you can turn it OFF to save energy.
11. Do not attempt to change the power cord by yourself if it has any damage. Contact the manufacturer or specialised service personnel. If the power cable suffers any damage, contact the manufacturer, his service representative or qualified personnel.
12. The equipment must be installed keeping easy access to the electrical plug.
13. WARNING - to avoid the risks of an unstable installation, the equipment must be installed following its instructions.
14. WARNING - keep the ventilation openings at the back of the appliance uncovered and unobstructed.
15. NOTICE - do not damage the refrigerant circuit.
16. The environmental temperature for this appliance should be between 18°C and 38°C.
17. This appliance can be used by children aged from 8 years and above and persons with reduced physical, sensory or mental capabilities or lack of experience and knowledge if they have been given supervision or instruction concerning use of the appliance in a safe way and understand the hazards involved. Children shall not play with the appliance. Cleaning and use maintenance should not be carried out by children without supervision. Do not store explosive substances such as aerosol cans with a flammable propellant in this appliance. This appliance is intended to be used in household and similar applications such as – staff kitchen areas, shops, offices and other working environments; – farm houses and by clients in hotels, motels and other residential type environments; – bed and breakfast type environments; – catering and similar non-retail applications
18. Do not place other appliances inside this equipment unless those are recommended by the manufacturer.
19. Do not store explosive substances such as spray cans inside this appliance.
20. Do not store explosive substances such as spray cans inside this appliance.

IMPORTANT INFORMATION ABOUT GROUNDING

- To provide additional protection from the risk of shock, this unit MUST be connected to a residual-current device (RCD) outlet at all times. Use of an extension cord will void any warranties.
- This appliance must be grounded. Improper use of the grounding plug can result in a risk of electric shock, causing serious injury and possibly death.
- This appliance is equipped with a power cord having a grounding wire with a grounding plug and must be connected into a properly-grounded, polarised outlet.
- Consult a qualified electrician if the grounding instructions are not completely understood, or if doubt exists as to whether the appliance is properly grounded. If the wall outlet is a standard, 2-prong outlet, it is your personal responsibility and obligation to have it replaced with a properly-grounded, 3-prong wall outlet.
- Do not under any circumstances cut or remove the third (ground) prong from the power cord plug. Do not use an adapter plug with this appliance.

UNPACKING THE WATER COOLER

1. After unpacking the water cooler, wipe with a soft cloth.
2. Place the machine on a hard, flat surface. Make certain the unit is level. The unit should not be close to direct sunlight or other sources of heat.
3. It is best to place the water cooler in an area with good air circulation. Make sure there is at least 10 cm of space between the back of your cooler and the wall. Keep a minimum distance of 5 cm on each side of your water cooler.

WARNING - The drain cap on the back of the unit may become loose during shipping. Fasten the drain cap tightly before you start to operate the unit. If the drain cap is loose, the unit may leak and cause floor damage.

INSTALLATION PROCEDURE

1. Make sure the water dispenser is not plugged into an electrical outlet.
2. Insert the water bottle vertically on the seat into the non-spill system of the water dispenser.
3. Press the cold water tap down until water begins to flow.
4. Insert the power plug into an electrical outlet.
5. Turn the electric switches to ON position to start the appliance.
DO NOT MOVE BOTH SWITCHES AT THE SAME TIME.
6. Cooling indicator lights should light up. The appliance is designed to provide cool or cold water whenever you need it. It will automatically turn on and off when the water reaches the desired temperatures.

CLEANING AND MAINTENANCE

- Remove or disconnect power before performing any maintenance or servicing the product.
- Never use detergent or chemicals to clean the water tanks.
- If dust or other exterior substance has accumulated on the condenser, wipe off with water-soaked soft cloth.
- Do not directly spray water on the surface of the product. Wipe the front and back of the product with water-soak soft cloth.
- After cleaning the product, ensure it is completely dried before beginning use again.

Recommended 6 monthly service

Full Inspection of unit

- Functionality of taps, drip trays, refrigeration units checked
- Full inspection of hoses and internal fittings
- Inspection and testing of refillable bottle and float valve assembly
- Adjustment of the thermostat if required and operational testing performed

Thorough clean and sanitise unit

- Full internal and external clean of the unit performed with drink-safe cleaner
- Self-filling systems and reservoirs are emptied and sanitised to maintain impeccable hygiene standards
- Ensured cleanliness of taps, drip trays and exterior of unit

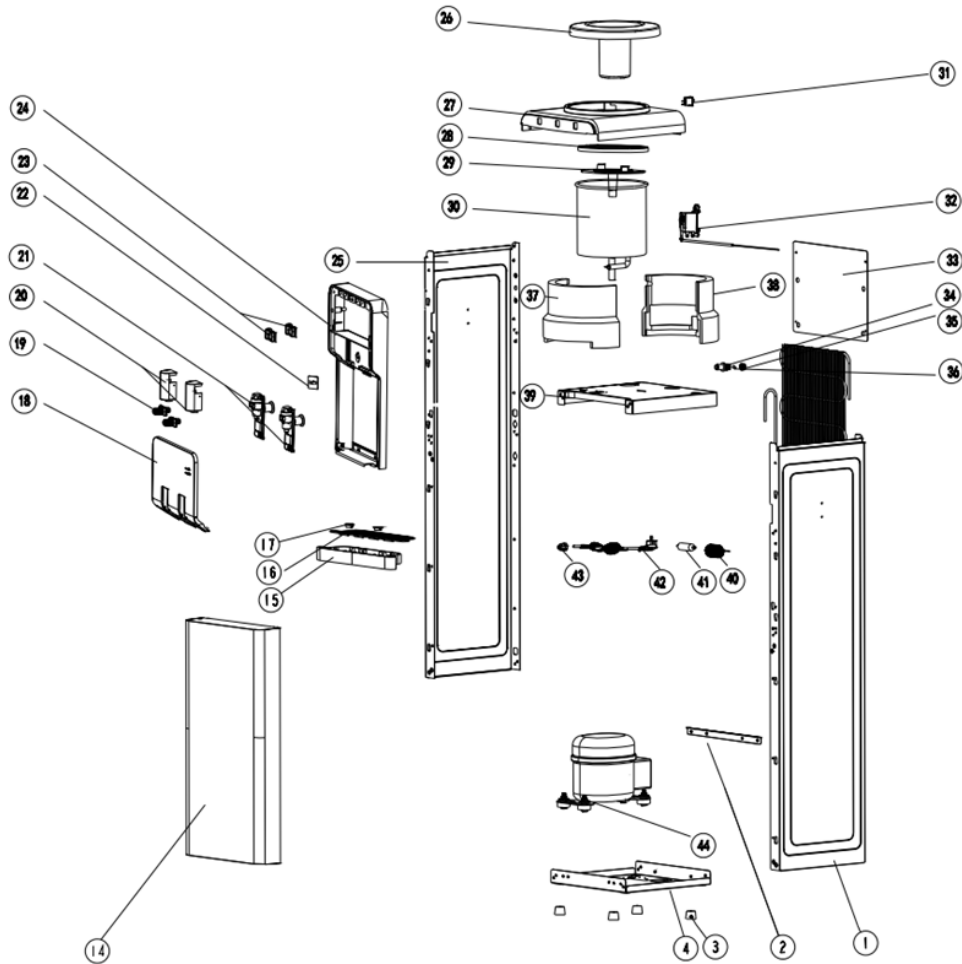
Replacement of filter cartridges (filters sold separately)

- Filters are flushed and water is run through the taps to expel any carbon fines and air pockets
- Ceramic disk inspected and replacement
- Taste test and visual inspection is conducted to ensure units provide the highest quality drinking water

TROUBLESHOOTING

Problem	Possible Cause	Remedy
Unit does not dispense cold water.	Over consumption of cold water in a short time.	Wait for 15 minutes while the water cools and try again.
	System malfunction.	Contact Aqua Cooler service team.
	The ventilation around the unit is insufficient.	Ensure sufficient ventilation space around the unit.
	The cold water switch is damaged or does not make contact	Replace the switch and check the electrical connection
	The electrical connection is loose	Repair connection
	The temperature of the water in the water bottle is too high.	Ensure the unit is not placed in direct sunlight or close to other heat sources.
	The cold water switch is in the OFF position.	Switch the cold water switch to the ON position.
Unit is noisy during operation.	Cold water baffle is not set properly.	Secure the cold water baffle in the cold tank.
	The appliance is not level.	Place the unit on a level, flat surface.
Water leaks from the faucet.	Unit is touching other objects.	Ensure the unit is standing free of any surrounding objects.
	The top portion of the faucet has come loose.	Tighten the top threaded portion of the faucet.
	The water container is broken.	Replace the water container
	The water pipe is broken.	Replace the water pipe
Lights are not functioning	The faucet has been damaged.	Replace the faucet or contact Aqua Cooler service team.
	Appliance is not connected to the electrical system.	Make sure the switch is ON and the plug is connected.
Water is dripping out of the water cooler and onto the floor.	The switch is not ON	Turn the switch into ON or turn the timer
	The hose connector is not connected properly.	Make sure the hose connector is properly connected.
	The inside water tanks are leaking.	Contact Aqua Cooler service team.
	The drain cap on the back is not fastened correctly.	Tighten the drain cap. If the sealing silicon material inside the drain cap is torn or damaged, then replace with a new one.
The water being dispensed has a strange taste.	Crack or pin holes in the bottle.	Replace with a new bottle.
	This is not uncommon with new water coolers. Do not worry, this is not dangerous to your health.	Clean the hose in the dishwasher (top rack only) or let it soak in dish soap. The strange taste usually goes away after the first bottle has been consumed.


EXPLODED DIAGRAM



SPARE PART LIST

#	Description	Code
1	Side Panel, RH	SPODY1
2	Connecting Strip	SPODY2
3	Foot, Mounting	SPODY3
4	Base, Metal	SPODY4
5	Door, Front	SPODY5
6	Drip Tray	SPODY6
7	Grille, Drip Tray	SPODY7
8	Trim Ring, Drip Tray	SPODY8
9	Faucet Cover	SPODY9
10	Adaptor, Faucet	SPODY10
11	Lever, Faucet	SPODY11
12	Body, Faucet	SPODY12
13	Trim, Faucet Cover	SPODY13
14	Faucet	SPODY14
15	Alcove, Front	SPODY15
16	Side Panel, Lh	SPODY16
17	No Spill Device	SPODY17

#	Description	Code
18	Gasket, Reservoir	SPODY18
19	Baffle	SPODY19
20	Cold Tank Assembly	SPODY20
21	Switch, Cold	SPODY21
22	Cold Control	SPODY22
23	Rear Cover	SPODY23
24	Body, Drain Valve	SPODY24
25	Seal, Drain Valve	SPODY25
26	Cap, Drain Valve	SPODY26
27	Insulation, Reservoir - Lh	SPODY27
28	Insulation, Reservoir - Rh	SPODY28
29	Shelf	SPODY29
30	Tube, Capillary	SPODY30
31	Drier, Filter	SPODY31
32	Power Cord	SPODY32
33	Strain Relief	SPODY33
34	Compressor Assy	SPODY34



AQUA
COOLER

Your Partner in Cool.

Phone Numbers

Sales: 1300 278 226
Service: 1800 278 226

Address

U14, 2-12 Knobel Court
Shailer Park QLD 4128

Internet

www.aquacooler.com.au
info@aquacooler.com.au