

VERSAFILLER SURFACE-MOUNTED ALL-IN-ONE

Wall-Mounted Mains-Connected All-In-One Unit

The VersaFiller Series comes in a wide range of configurations, including single and split-level designs, both of which feature either manual or contactless bubblers and bottle fillers.



AC-P8EBFY

KEY FEATURES

- Stainless steel top and heavy duty frame with galvanized or stainless steel option
- High efficiency cooling system and refrigerant R-134a
- Built-in 100 micron strainer stops particles before they enter the waterway
- Waterways are lead free in materials and construction
- External stream height adjustment on bubblers
- Hands-free bottle filler with programmable shut off timer (hands free version only)
- Integrated bottle counter and filter monitor. (hands free version only)

With the option to upgrade to a vandal-resistant design, the VersaFiller is perfect for schools and other public areas. All VersaFiller fountains use R-134a refrigerant and have an efficient, high-performing refrigeration system.

All Oasis bottle fillers are made with proprietary Freshield technology. Freshield harnesses the natural bacteria-fighting power of silver by infusing it into a poly compound on moulded parts of the alcoves.



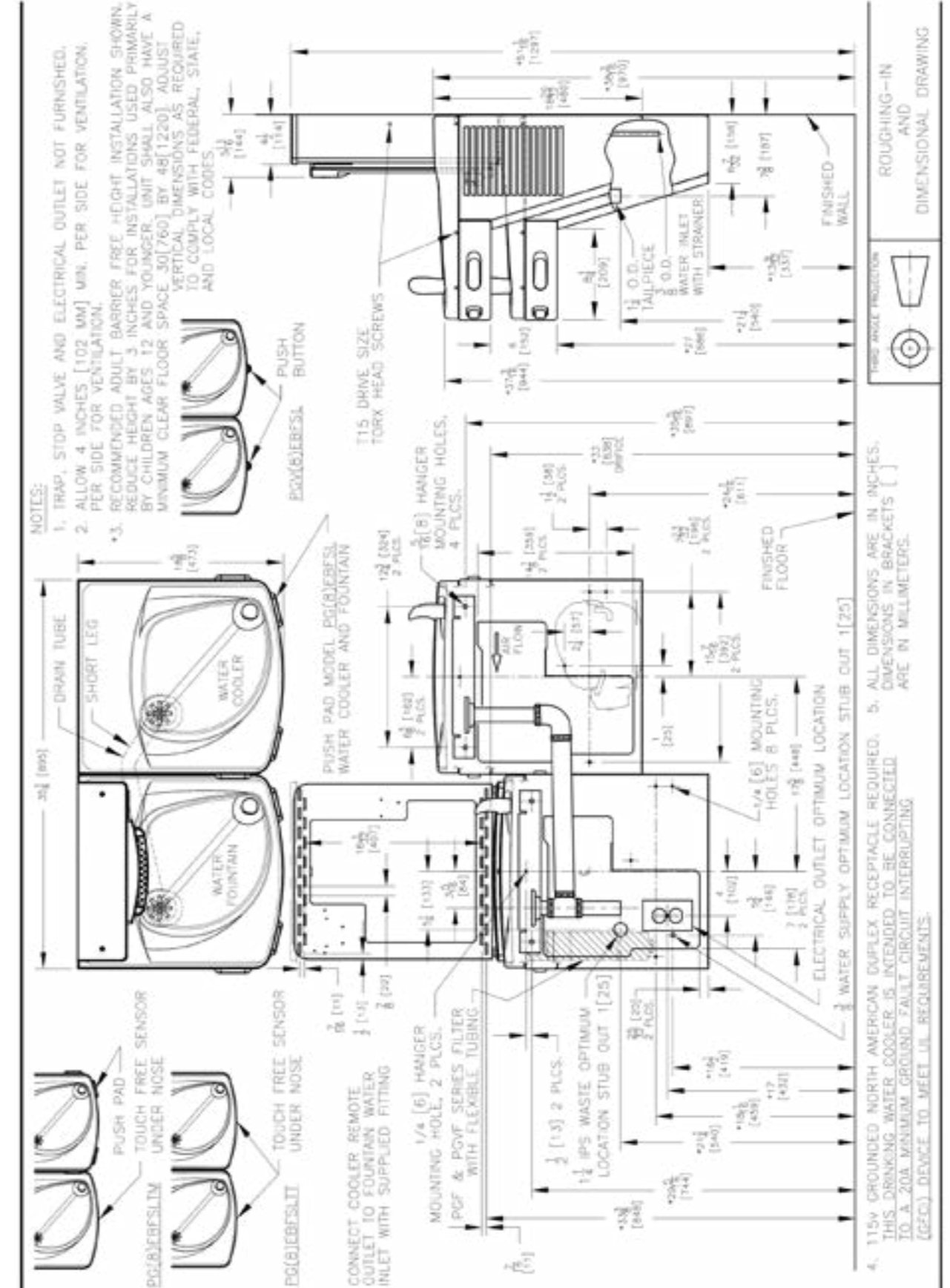
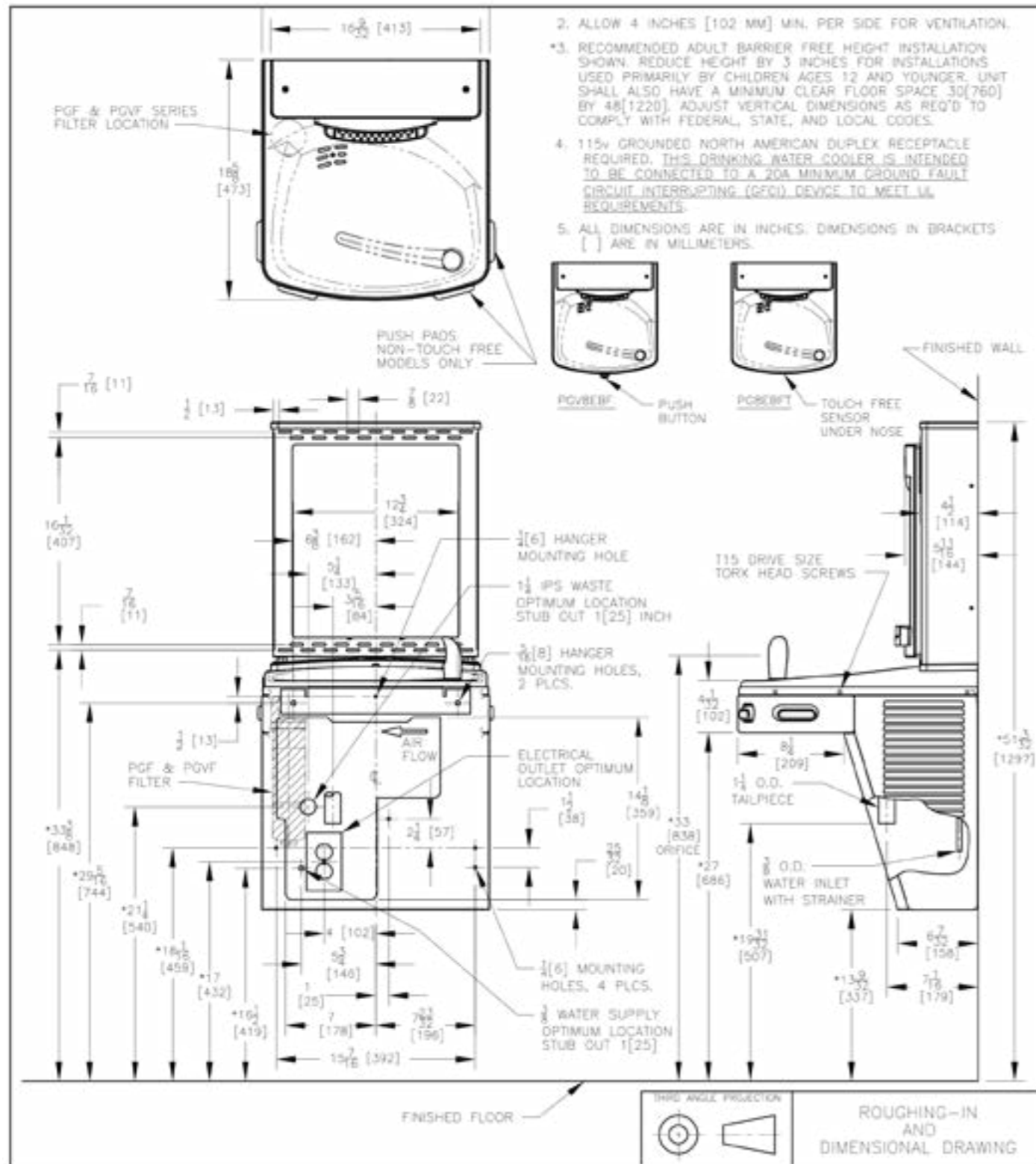
AC-P8EBFSLTY

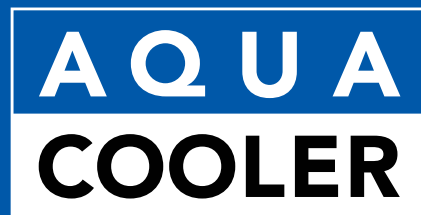
Model Information

	AC-P8EBFY	AC-PV8SBFY	AC-PV8EBFY	AC-P8EBFTY	AC-PV8SBFSLY	AC-PV8EBFSLY	AC-P8EBFSLTY	
	Single Level				Split Level			
Bottle Filler Activation	Contactless	Manual	Contactless	Contactless	Manual	Contactless	Contactless	
Drinking Fountain Activation	Manual	Manual, Vandal Resistant	Manual, Vandal Resistant	Contactless	Manual, Vandal Resistant	Manual, Vandal Resistant	Contactless	
Sensor Coverage	Up to 5cm (approx.)	n/a	Up to 5cm (approx.)		n/a	Up to 5cm (approx.)		
Filtration	Filter (optional), Built-in 100 micron strainer							
Water Connections	Inlet: 1/2" BSP connector, Drain: 40mm Female Socket (Not trapped)							
Exterior	Antimicrobial ABS Plastic, Brushed Stainless Steel							
Chassis	Heavy Duty Galvanised Steel							
Dimensions	960(H) x 413(W) x 473(D)				960(H) x 895(W) x 473(D)			
Alcove Height	250mm							
Net Weight	31kg				43kg			
Power Supply	220-240V, 50/60 Hz							
Cooling Performance	60 LPH - Rated Capacity & Base Rate - (10°C in 21°C amb. temp.)							
Full Load Amps	2.2 A							
Rated Watts	457 W							
Country of Origin	Mexico							
Certifications	WaterMark, ANSI/NSF 61, CABO/ANSI A117.1, ADA, CE (LVD, EMC, RoHS)							
Warranty	1 Year Full, 2 Years Parts Only							

Your Partner in Cool.

**AQUA
COOLER**





Your Partner in Cool.