



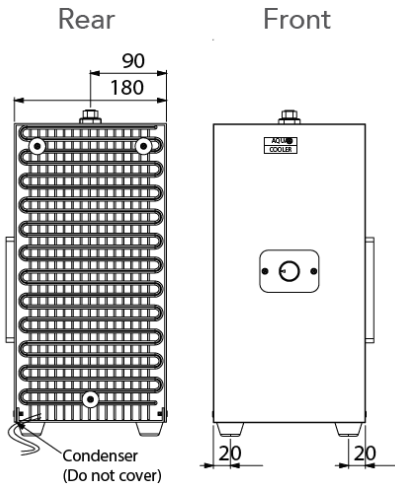
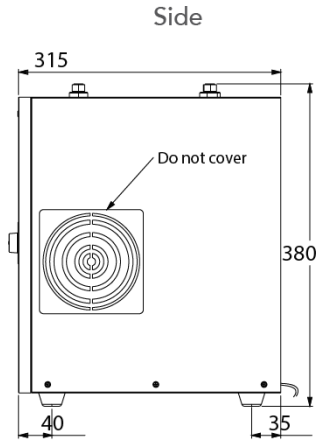
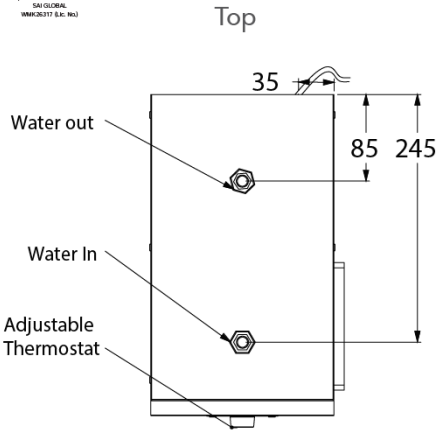
# H2O NOW UNDERBENCH CHILLER

## Usage and Care Manual

**Models:** SMC30, SMC45 and SMC75

Your Partner in Cool.

**AQUA**  
**COOLER**



# TECHNICAL SPECIFICATIONS

Cold Water	Water Inlet	1/4" quick connect fitting
	Water Outlet	1/4" quick connect fitting
Tank Capacity	4L	
Tank Material	Stainless Steel 304	
Refrigerant	60g R134a	
Electrical	220 - 240V 50Hz	
Power	150W	
Weight	12Kg	
Max Pressure	400kpa	
Min Pressure	20kpa	
Dimensions	18cm (W) x 31.5cm (D) x 38cm (H)	
Warranty	Twelve month warranty comprehensive coverage, additional forty-four month compressor replacement.	

**This unit is supplied with a pressure limiting valve.  
Please install the valve between the water source and inlet during installation.**

\*This product complies with the lead-free requirements of the National Construction Code Volume Three

## IMPORTANT SAFETY INSTRUCTIONS

When using electrical appliances, basic safety precautions should be followed to reduce the risk of fire, electric shock, and injury to persons or property. Read all instructions before using any appliance.

- Keep combustible material such as furniture, bedding, pillows, clothes, and/or papers away from the back of the unit.
- Do not operate this, or any other appliance, with a damaged power cord.
- No other appliance should be plugged into the same outlet. Be sure that the plug is fully inserted into the outlet.
- Do not run the power cord over carpeting or other heat insulators.
- Do not cover the power cord.
- Keep the power cord away from high traffic Areas
- Do not submerge the power cord in water.
- We do not recommend the use of extension cords as they may overheat and cause a risk of fire.
- Exercise caution and use reasonable supervision when the appliance is used by or near children.
- Do not use this product to dispense anything other than water.
- If the supply cord is damaged, the manufacturer, one of its service agents or a similarly qualified person must replace it in order to avoid a hazard

- Remove power plug or disconnect from the main power source before servicing the appliance.
- Warranty will also be voided if installation is not carried out as detailed in this instruction manual.

## Important Information About Grounding

- To provide additional protection from the risk of shock, this unit **MUST** be connected to a residual current device (RCD) outlet at all times. Use of an extension cord will void any warranties.
- This appliance must be grounded. Improper use of the grounding plug can result in a risk of electric shock, causing serious injury and possibly death.
- This appliance is equipped with a power cord having a grounding wire with a grounding plug and must be connected into a properly-grounded, polarised outlet.
- Consult a qualified electrician if the grounding instructions are not completely understood, or if doubt exists as to whether the appliance is properly grounded
- Do not under any circumstances cut or remove the third (ground) prong from the power cord plug. Do not use an adapter plug with this appliance.

# INSTALLATION PROCEDURE

## Important information about the unit and operation



**Electrician Needed For Installation**

1. The underbench chiller is not intended for outdoor use.
2. All service work to be carried out by authorised Aqua Cooler service agents only. Failure to do so will void the warranty on the water cooler.
3. Warranty will also be voided if installation is not carried out as detailed in the AquaCooler installation instructions.
4. Please ensure the chiller is not tilted during transportation. If the chiller is tilted, please leave the chiller in upright position for at least 30 minutes before turning on the chiller.
5. If the power cord is unplugged, please wait for at least 3 minutes to re-plug the power cord to prevent initiating the overload protector of compressor.
6. The compressor motor is equipped with an automatic reset protector which will disconnect the motor from the line in case of an overload.

## Unpacking the water fountain

1. Place the machine on a hard, flat surface. Make certain the unit is level. The unit should not be close to sources of heat otherwise performance may be affected.
2. Please inspect the carton and water cooler for evidence of rough handling and concealed damage. Damage claims should be filed with the carrier.

## Connecting the fountain to mains water supply

The installation must be in accordance with AS/NZS 3500.1 and AS/NZS 3500.2.

**Aqua Cooler recommends this process is performed by qualified personnel only.**

1. Ensure power is switched off, the unit should not be turned on until the internal tank is full.
2. Refer to photo on the next page for parts assembly example.
3. Ensure proper ventilation by allowing 50mm clearance on each side of the cooler.
4. The unit is supplied with a mains pressure relief valve and a shut off valve which must be installed in between the mains water supply source and the underbench chiller "water inlet" fitting.
5. Minimum water pressure is 100 kpa and maximum is 700 kpa. The recommended maximum water inlet temperature is 38°C.
6. Please note this unit is fitted with a waste drain and connection to the mains water drainage system is required.
7. Check the available power supply against the underbench chiller data plate to assure correct electrical service. Be sure that the plug is fully inserted into the grounded outlet and that no other appliance is plugged into the same outlet.
8. Connect the mains water to the underbench chiller via 1/4" pipe, ensuring that the supplied mains pressure relief valve is placed inline between the mains water source and the water chillers water inlet fitting. We recommend a shut off valve or similar is installed between the mains water pipework and the pressure limiting valve.
9. Connect the chilled water to the faucet (sold separately) from the water outlet connection on the underbench chiller to the inlet point connection of the faucet, Please refer to your chosen faucet details for further information.
10. Turn on water supply, ensuring you turn your faucet on to purge the system of air until a steady stream of water appears from your faucet. Continue to flush freshwater through the system for 5 minutes.
11. Turn on the thermostat to desired coldness and wait for the water to chill down for the first time.12.For models equipped with faucet or glass filler, please assemble the faucet or glassfiller by placing the neck onto the desired position of the sink.13.Check all connections for water leaks.

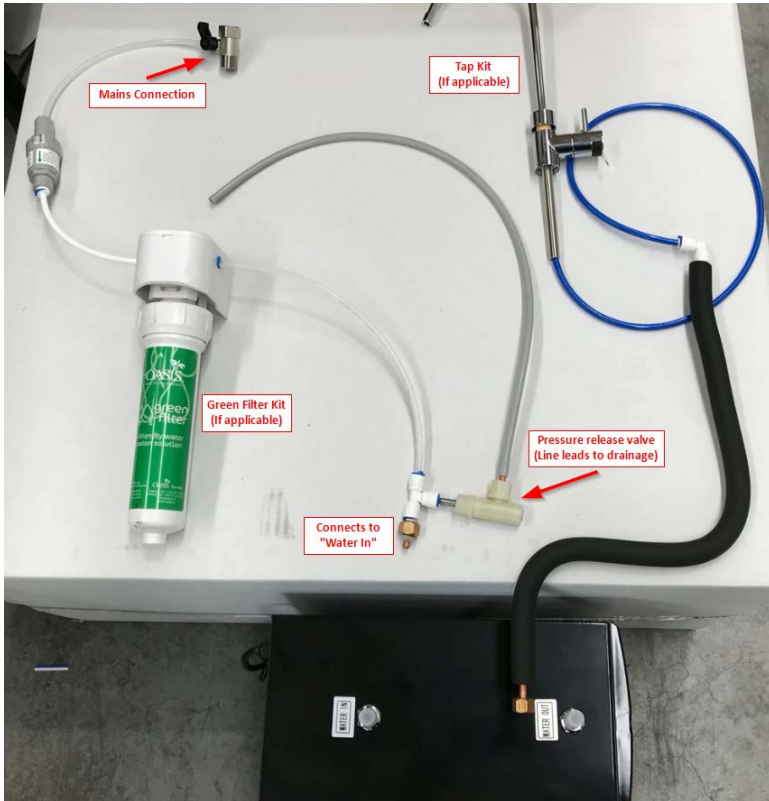
## Removing from service:

- 1.Disconnect the power supply cord.
- 2.Disconnect the water supply.
- 3.Disconnect the faucet from unit. Refer to your faucet instructions for further information.
- 4.Drain the reminding water inside the reservoir.

## Maintenance

1. The only maintenance operation required is the removal of dirt and lint from the condenser. Inspection should be made at 3 month intervals.
2. Disconnect the power supply.
3. Clean the condenser with a small stiff non-wire brush.
4. The unit is equipped with a hermetically sealed compressor and requires no additional lubrication.
5. The fan motor on this unit seldom needs oiling. If required, a few drops of SAE 10 oil should be used
6. Aqua Cooler recommends the water fountain is cleaned every month, ensuring there is no blockage in the condenser or in the back of the unit. Please remove all potentially harmful factors to prevent any scratch or damage to the unit.
7. If customers require the unit's spare parts information, please contact the AquaCooler Service Department for further assistance.

## H2O Now - Chiller Parts Assembled



# TROUBLE SHOOTING

If you need any assistance with troubleshooting please call Aqua Cooler service department on 1800 AQUA COOLER or +61 2 9721 9300 or email [care@aquacooler.com.au](mailto:care@aquacooler.com.au)

## 1. No water flowing out of the glass filler or faucet

Possible Reasons	Solutions
<b>Mains water is not available</b>	Check the mains water to the building is still available. Check there is no isolation valves on the plumbing pipework that has been closed off preventing water being provided to the chiller.
<b>The faucet is faulty and is not letting water through</b>	Check with your faucet instructions on how to troubleshoot a faulty faucet.

## 2. Water is not cold

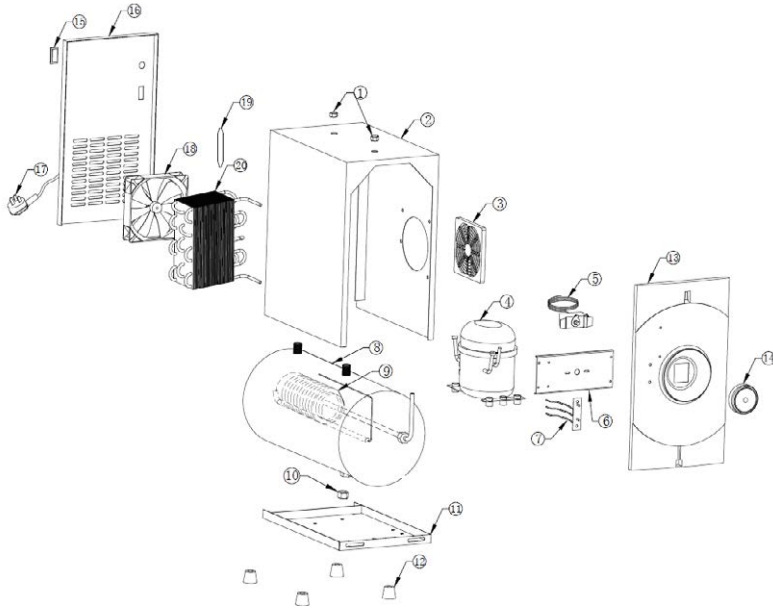
Possible Reasons	Solutions
<b>The cooling thermostat is turned off</b>	Check the mains water to the building is still available. Check there is no isolation valves on the plumbing pipework that has been closed off preventing water being provided to the chiller.
<b>Power failure</b>	Check with your faucet instructions on how to troubleshoot a faulty faucet.
<b>Cooling system failure</b>	Please turn off the cooler and water supply. Call technical service for detailed inspection.

# MARKS



The appliance is complying with applicable ACMA regulatory arrangements (Regulatory Compliance Mark) and Watermark WMTS 105:2016.

# EXPLODED DIAGRAM



## Spare Part List

#	Part	Quantity	Code	#	Part	Quantity	Code
1	Nut	2	H2OPC-SP1	11	Floor Plate	1	H2OPC-SP11
2	Frame	1	H2OPC-SP2	12	Matt	4	H2OPC-SP12
3	Dust-proof Net	1	H2OPC-SP3	13	Front Panel	1	H2OPC-SP13
4	Compressor	1	H2OPC-SP4	14	Knob	1	H2OPC-SP14
5	Cold Thermostat	1	H2OPC-SP5	15	Ship Type Switch	1	H2OPC-SP15
6	Hang plate	1	H2OPC-SP6	16	Rear Panel	1	H2OPC-SP16
7	Indicator Light	1	H2OPC-SP7	17	Power Plug	1	H2OPC-SP17
8	Cold Tank	1	H2OPC-SP8	18	Motor Fan	1	H2OPC-SP18
9	Evaporator	1	H2OPC-SP9	19	Dryer	1	H2OPC-SP19
10	Plug	1	H2OPC-SP10	20	Condenser	1	H2OPC-SP20

# WARRANTY AND SERVICE REGISTRATION

## For All Aqua Cooler Remote Water Products

Effective July 2017

Aqua Cooler Pty Ltd warrants this appliance to the first purchaser as follows and subject to the stated conditions.

**12 Month Comprehensive Warranty** - Any defect in the appliance occurring within the first twelve months from the date of purchase will be rectified free of charge by Aqua Cooler Pty Ltd or by any authorised independent Service Agent.

**24 Month Extended Warranty** - Aqua Cooler Pty Ltd agrees to replace any part of the hermetically sealed refrigeration system which becomes inoperative in the two years following the first years comprehensive warranty. This extended warranty covers the compressor, condenser, and interconnecting refrigeration pipework. It excludes compressor relays, overloads and all other components of this appliance. This extended warranty does not include service, repair or labour costs or any pickup and/or freight charges. Aqua Cooler at its sole discretion may replace the cooler with a new or refurbished cooler of a similar age.

### Warranty Exclusions

1. Any costs associated with the removal and reinstallation of repaired or replaced units.
2. Travel expenses to locations further than 100km from any Australian capital city CBD or further than 100km of a registered Service Agent.
3. Damage to units where mains connected pressure is higher than 700 kPa and a pressure limiting valve is not installed.
4. Where the unit is not installed as per installation instructions found within the supplied user manual.
5. The warranty does not cover defects occasioned by misuse, alterations, accident or where the water cooler has been stored on its side.

FOR ANY CLAIM UNDER THIS WARRANTY PLEASE CONTACT AQUA COOLER PTY LTD

PHONE: +61 (02) 9721 9300 OR EMAIL: care@aquacooler.com

Thank you for your custom and we hope our product provides many years of fault free operation. To enable us to register your warranty and provide best possible service should a problem occur, we recommend you fill out the section below and return it to us immediately.

---

---

This warranty is provided in addition to other rights and remedies you have under law: Our goods come with guarantees which cannot be excluded under the Australian Consumer Law. You are entitled to replacement or refund for a major failure and to compensation for other reasonably foreseeable loss or damage. You are also entitled to have the goods repaired or replaced if the goods fail to be of acceptable quality and the failure does not amount to a major failure.

---

---

### Warranty and Service Registration Form

Please fill in this form and mail to us or send via email to care@aquacooler.com. If this form is not completed and returned the warranty period will be deemed to have commenced from date of manufacture.

COMPANY NAME (if applicable):

CONTACT NAME:

PHONE NUMBER:

ADDRESS:

SUBURB:

POSTCODE:

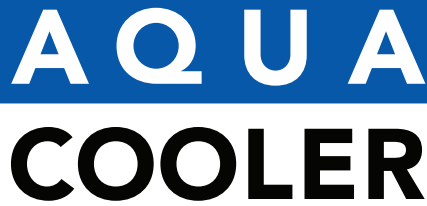
MODEL NUMBER:

SERIAL NUMBER:

PURCHASED FROM:

DATE OF PURCHASE:

Your Partner in Cool.



# AQUA COOLER

Your Partner in Cool.

**Phone Numbers**

Sales: 1300 278 226  
Service: 1800 278 226

**Address**

30-36 Relentless Court  
Park Ridge QLD 4125  
Australia

**Internet**

[www.aquacooler.com.au](http://www.aquacooler.com.au)  
[care@aquacooler.com](mailto:care@aquacooler.com)

© Aqua Cooler 2026 - Version 0626

This document is available digitally on our website at [www.aquacooler.com.au/remote-water-systems/h2onow-chiller/](http://www.aquacooler.com.au/remote-water-systems/h2onow-chiller/)